



Climate and Oceans Support
Program in the Pacific



Australian Government
Bureau of Meteorology

Monthly Data Report - May 2016

Pacific Sea Level Monitoring Project





Australian Government
Bureau of Meteorology

© Commonwealth of Australia 2016

This work is copyright. Apart from any use as permitted under the *Copyright Act 1968*, no part may be reproduced without prior written permission from the Bureau of Meteorology. Requests and inquiries concerning reproduction and rights should be addressed to the Publishing Unit, Bureau of Meteorology, GPO Box 1289, Melbourne 3001. Requests for reproduction of material from the Bureau website should be addressed to AMDISS, Bureau of Meteorology, at the same address.

Published by Bureau of Meteorology



Table of Contents

List of Tables	iv
List of Figures	iv
Executive Summary	1
Introduction	2
Sea Level and Climate	4
May SEAFRAME Data	5
Monthly Sea Level and Environmental Data.....	5
Monthly Means and Anomalies.....	7
Overall Rate of Movement in Sea Level	8
Instrument Performance	9
SEAFRAME Stations.....	10
Observation Network Upgrade Project	11
Tide Prediction Extension Project.....	11
Further Information.....	12
Online Resources	12
Acknowledgement	12
Appendix 1: SEAFRAME Data Figures	13

List of Tables

Table 1. Updated overall rates of sea level movement based on SEAFRAME data from installation through May 2016.	8
Table 2. Rates of sea level data return.....	9
Table 3. Schedule of SEAFRAME station equipment upgrades.....	11

List of Figures

Figure 1. Pacific Sea Level Monitoring Network of SEAFRAME stations.	3
Figure 2. Schematic diagram of a SEAFRAME sea level monitoring station.....	10
Figure 3. Sea level observations during May 2016.....	14
Figure 4. Residual sea levels during May 2016.....	15
Figure 5. Residual sea levels adjusted for barometric pressure during May 2016.	16
Figure 6. Wind speeds during May 2016.....	17
Figure 7. Wind gusts during May 2016.....	18
Figure 8. Incident winds during May 2016.....	19
Figure 9. Air temperatures during May 2016.	20
Figure 10. Water temperatures during May 2016.....	21
Figure 11. Barometric pressures during May 2016.....	22
Figure 12. Comparison of May 2016 data with long term May values.....	23
Figure 13. Monthly mean sea levels to May 2016.	24
Figure 14. Monthly mean barometric pressures to May 2016.	25
Figure 15. Monthly mean water temperatures to May 2016.	26
Figure 16. Monthly mean air temperatures to May 2016.....	27
Figure 17. Monthly sea level anomalies to May 2016.....	28
Figure 18. Monthly barometric pressure anomalies to May 2016.....	29
Figure 19. Monthly water temperature anomalies to May 2016.....	30
Figure 20. Monthly air temperature anomalies to May 2016.	31
Figure 21. Sea level data return.	32



Executive Summary

This summary, and the overview that follows, are intended to provide a synopsis of the recent month's observations in addition to longer term variations over the life of the project to date.

May 2016

- The SEAFRAME network continued to collect high quality sea level and associated meteorological information for monitoring climate variability and climate change.
- The overall rate of sea level data returned from the network during May was 98.4%.
- Large astronomical spring tides were observed as a new moon coincided with lunar perigee on the 6th May, but favourable climate conditions and calm weather alleviated any combined risk of inundation.
- Sea levels remained lower than normal at many stations, but not to the extent seen earlier in the year during the peak of the 2015/16 El Niño. Monthly anomalies at Solomon Islands, Kiribati, Nauru, Samoa and Fiji were well below -10 cm.

Introduction

Welcome to the May 2016 Monthly Data Report for the Pacific Sea Level Monitoring Project (PSLMP). The report details the month by month operation of the SEAFRAME monitoring stations in the Pacific, including operational problems with the network or with satellite communications, the occurrence of abnormal sea level events and the interpretation of sea level fluctuations in the context of related astronomical tide, weather and climate variations.

The PSLMP continues the work of the South Pacific Sea Level and Climate Monitoring Project (SPSLCMP) under a wider Climate and Oceans Support Program in the Pacific (COSPPac) initiative. The SPSLCMP was originally developed as an Australian response to concerns raised by the member countries of the South Pacific Forum over the potential impacts of global warming on climate and sea levels in the Pacific with the principal objective of 'the provision of an accurate long term record of sea level in the South Pacific for partner countries and the international scientific community which enables them to respond to and manage related impacts'.

The project's sea level monitoring network consists of 12 SEAFRAME stations providing wide coverage across the Pacific Islands Forum region (Figure 1). The SEAFRAME stations not only measure sea level, but also observe a number of "ancillary" variables - air and water temperatures, wind speed, wind direction and atmospheric pressure.

An associated geodetic measurement program, implemented by Geosciences Australia, supports levelling surveys to first order, to determine shifts in the vertical of the sea level sensors due to local land movement, as well as continuous Global Positioning System (CGPS) stations to determine the vertical movement of the land with respect to the International Terrestrial Reference Frame.

Observations collected by the sea level monitoring network are routinely processed into a range of quality-controlled data products. The monthly data report is the primary source of up-to-date information relating to these data products.



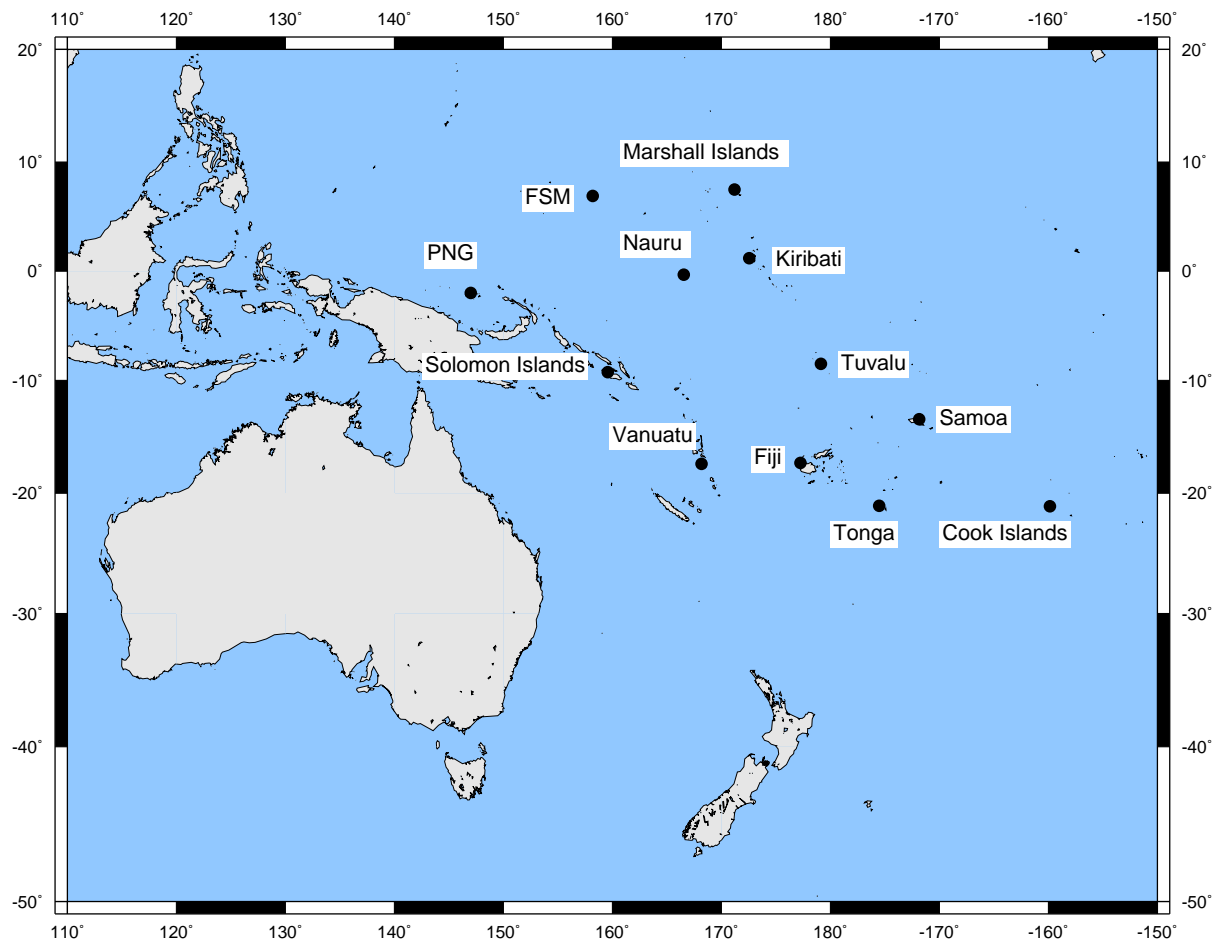


Figure 1. Pacific Sea Level Monitoring Network of SEAFRAME stations.

Sea Level and Climate

Astronomical tides and weather conditions are largely responsible for daily perturbations in sea level, but over monthly, seasonal and longer timescales sea levels in the tropical Pacific are largely influenced by fluctuations in climate and ocean heat content across the Pacific.

The El Niño – Southern Oscillation climate cycle plays a key role in sea level variability. During El Niño sea levels are generally lower than normal across the western equatorial Pacific, as measured by the project's sea level network, in response to weaker than normal easterly Trade Winds, cooler than normal ocean temperatures and higher than normal barometric pressures in this region. On the other hand during La Niña the easterly Trade Winds are typically stronger than normal, ocean temperatures are warmer than normal and barometric pressures are lower than normal across the western Pacific, which often results in higher than normal sea levels at many of the project stations.

The sea level stations at PNG, Solomon Islands, Tuvalu and Samoa lie along a zone of convergent winds, known as the South Pacific Convergence Zone. Sea levels at these stations may become higher or lower than normal depending on the strength of these convergent winds or the shifting position of the convergence zone relative to its climatological mean. The sea level stations at Nauru and Kiribati lie very close to the equator and can both be influenced by sea level signals propagating along the equatorial waveguide.

A summary of recent and past climate conditions across the equatorial Pacific is provided by the Bureau of Meteorology in its monitoring of the El Niño – Southern Oscillation cycle at <http://www.bom.gov.au/climate/enso/>

Further climate information for Pacific Island countries is provided by the Climate and Ocean Monitoring and Prediction (COMP) Project under the Climate and Oceans Support Program in the Pacific (COSPPac).



May SEAFRAME Data

Monthly Sea Level and Environmental Data

The observed sea levels (Figure 3) are dominated by the daily oscillations of the tide. In most cases, the tide rises and falls twice per day (semi-diurnal), but at PNG and the Solomon Islands the tide tends to have a single high and low per day (diurnal). Where the tides follow a semi-diurnal pattern the greatest tidal variations are called spring tides, which tend to occur around the time of the new and full moons. A new moon was observed on the 6th of May, which coincided with lunar perigee resulting in particularly large spring tides, while a full moon was observed on the 21st of May.

Gaps in the data are the result of instrumental errors or data retrieval problems and are discussed under Instrument Performance.

The residuals (Figure 4) are the differences between the observed sea levels and the astronomical tidal predictions. They highlight non-tidal sea level fluctuations, such as those due to the effects of weather or tsunamis. Tropical cyclones can produce storm surges where the combination of low barometric pressure and strong winds raise sea levels well above the predicted astronomical tides for a period of a day or more.

The non-tidal sea level fluctuations can be amplified or sustained by the shape of the harbour in which the gauge is located. Some of the SEAFRAME stations are located in harbours that exhibit 'sloshing' under certain conditions (a phenomenon referred to as a seiche), such as at PNG when the wind suddenly changes strength or direction, at

FSM during smaller neap tides and at Nauru during strong westerly winds.

The sea level residuals at all stations, to some degree, exhibit semi-diurnal or diurnal fluctuations, which last a few days or weeks and then disappear. If these fluctuations were to persist they would form part of the astronomical tide prediction and thus not appear as residuals. Consequently semi-diurnal and diurnal residual fluctuations will always be transient in nature.

The barometrically corrected residuals (Figure 5) have had the effect of atmospheric pressure fluctuations removed from the sea level residuals of Figure 4. The rule of thumb for the 'inverse barometer effect' is that a 1-hPa fall in the barometer, if sustained over a day or more, produces a 1-cm rise in the local sea level (within the area beneath the low pressure system).

The winds, temperatures and barometric pressures are plotted in Figure 6 through Figure 11. The incident winds in Figure 8 follow the meteorological convention, that is, they point in the direction the wind is coming from. For example, the winds at Marshall Islands prevailed from the northeast for most of May.

Air and water temperatures (Figure 9 and Figure 10) are plotted using the same vertical scale for the purpose of comparison. The air temperatures are seen to fluctuate over a much wider range than the water temperatures. At some sites (e.g. Solomon

Islands) the water temperature shows almost no variation, although the air temperature varies by several degrees between night and day. At Nauru a twice-daily fluctuation in water temperature is related to interactions between tides and terrestrial (land-based) water discharging into the wharf area. The water temperature fluctuations there are usually more pronounced during the larger spring tides.

Barometric pressures (Figure 11) tend to fluctuate by around 3 hPa twice-daily at all stations as a result of atmospheric tides, which are largest in the tropical regions and reduce to near zero toward the poles. The longer-term barometric pressure fluctuations that occur over periods of days to weeks are due to passing weather systems. These fluctuations tend to be larger at sites farther away from the equator such as Cook Islands and Tonga.

The monthly sea level and ancillary data are put into perspective by Figure 12. In this figure, if an open circle falls above (below) a solid dot, a new maximum (minimum) for the particular month has

been set. The data sets only include Pacific Sea Level Monitoring Project data, which have been collected since October 1992 when the first station was installed at Fiji. The data from Federated States of Micronesia (FSM) has only been collected since December 2001.

A record-high May water temperature of 31.6 °C was observed at Tuvalu, while monthly minimum air temperatures at Tonga (18.0 °C) and Cook Islands (16.9 °C) equalled the previous record-low values for May.

Further sea level and meteorological statistical information is available at <http://www.bom.gov.au/oceanography/projects/spslcm/data/monthly.shtml>



Monthly Means and Anomalies

Figure 13 through Figure 16 show the monthly means, or simple arithmetic averages, for sea level, barometric pressure, water temperature and air temperature. Averaging over a month removes tidal and daily fluctuations, which helps reveal the seasonal, annual and longer-period variations in the records. Tuvalu, for example, normally experiences an annual sea level cycle of about 0.2 metres, reaching a peak around February or March. One effect of the El Niño of 1997-1998 was very low sea levels which disrupted the annual sea level cycle at many of the SEAFRAME stations.

Figure 17 through Figure 20 show the monthly mean sea level, barometric pressure, air temperature and water temperature anomalies. The sea level anomalies are the monthly-averaged residuals after tides, annual and semi-annual seasonal cycles and linear slope have been removed, by way of a harmonic tidal analysis of the complete record. The annual sea level cycle at Tuvalu (which has the largest consistent annual cycle) is quite noticeable in Figure 13 but less apparent in Figure 17. By removing the seasonal cycles, the anomalies help to bring out irregular features, such as lower than normal sea levels across the region during the 1997/98 El Niño.

Monthly sea levels remained lower than normal at many sites during May 2016 (Figure 17), although not to the extent seen earlier in the year which is consistent with the decay of the 2015/16 El Niño. Sea level anomalies well below -10 cm were

observed at Solomon Islands, Kiribati, Nauru, Samoa and Fiji. Monthly sea levels at Marshall Islands, FSM and Cook Islands were near normal for this time of year.

The anomalies of barometric pressure, water and air temperature are determined in the same manner as the sea level anomalies, except the linear slope is not calculated.

The barometric pressure anomalies (Figure 18) show substantially higher than normal barometric pressures were observed at SEAFRAME stations during the 1997-1998 El Niño and to a lesser extent the 2015-2016 El Niño. The anomalies during May 2016 were generally smaller than earlier in the year but exceed +1 hPa at Kiribati, Nauru, Vanuatu, Fiji and Cook Islands.

The water temperature anomalies (Figure 19) show near-normal conditions during May 2016, whereas air temperature anomalies (Figure 20) were slightly warm across much of the network, exceeding +0.5 °C at Marshall Islands, FSM, PNG, Solomon Islands, Kiribati, Nauru and Samoa. Slightly cooler than normal air temperatures were observed at Cook Islands.

Over the duration of the record the air temperature anomalies generally (although not always) follow the water temperature anomalies, which is an indication of the large influence the ocean has upon the climate of the Pacific Islands.

Overall Rate of Movement in Sea Level

Table 1 shows the overall rate of movement in sea level at individual Pacific stations based on the data so far collected at those sites. For many of the sites, the underlying data sets are around twenty years in length.

The overall rates of movement are updated every month by calculating the linear slope during the tidal analysis of all the data available at individual stations. The rates are relative to the SEAFRAME

sensor benchmark, whose movement relative to inland benchmarks is monitored by Geosciences Australia.

Please exercise caution in interpreting the overall rates of movement of sea level – the records are too short to be inferring long-term trends.

Table 1. Updated overall rates of sea level movement based on SEAFRAME data from installation through May 2016.

Location	Latitude	Longitude	Date of first data	Rate ¹ (mm/yr)	Change in rate from previous month (mm/yr)
Marshall Is.	7°6'21.7"N	171°22'22.1"E	May 1993	3.7	0.0
FSM	6°58'49.9"N	158°12'0.8"E	Dec 2001	5.2	+0.1
PNG	2°2'31.5"S	147°22'25.6"E	Sep 1994	4.8	-0.1
Solomon Is.	9°25'44.1"S	159°57'19.3"E	Jul 1994	4.1	-0.2
Kiribati	1°21'54.2"N	172°55'58.8"E	Dec 1992	4.1	-0.1
Nauru	0°31'45.9"S	166°54'36.2"E	Jul 1993	5.8	-0.2
Tuvalu	8°30'8.9"S	179°11'42.6"E	Mar 1993	3.5	-0.1
Samoa	13°49'36.4"S	171°45'40.7"W	Feb 1993	7.9	-0.1
Vanuatu	17°45'19.2"S	168°18'27.7"E	Jan 1993	2.3	-0.1
Fiji	17°36'17.7"S	177°26'17.7"E	Oct 1992	4.3	-0.1
Tonga	21°8'12.5"S	175°10'50.5"W	Jan 1993	6.9	-0.1
Cook Is	21°12'17.1"S	159°47'5.2"W	Feb 1993	4.2	0.0

¹Relative to SSBM (SEAFRAME Sensor Bench Mark)



Instrument Performance

In Figure 21, which shows sea level data return, the columns represent the percentage of quality-controlled data returned from the gauge each month.

Sea level data return from the network was 98.4% during May 2016 and 96.2% overall since the start of the project (Table 2). An outage of satellite data

communications at Kiribati from 29th April was rectified on 5th May. Nauru suffered data losses through 23-24th May, but technicians managed to reboot the station remotely.

No major problems were encountered with the ancillary sensors during May.

Table 2. Rates of sea level data return.

Location	Installation Date	Data Return Since Installation (%)	Data Return in May 2016 (%)
Cook Is	Feb 1993	97.1	100
Tonga	Jan 1993	98.6	100
Fiji	Oct 1992	98.9	100
Vanuatu	Jan 1993	95.6	100
Samoa	Feb 1993	96.9	100
Tuvalu	Mar 1993	96.8	100
Kiribati	Dec 1992	94.6	87.1
Nauru	Jul 1993	91.9	93.7
Solomon Is.	Jul 1994	98.7	100
PNG	Sep 1994	92.8	100
FSM	Dec 2001	93.7	100
Marshall Is.	May 1993	98.4	100
Network Average		96.2	98.4

SEAFRAME Stations

Standard SEAFRAME stations now employ a TELMET (previously SUTRON) programmable data logger, water level gauges and other sensors. The data logger and associated electronics are normally housed in fibreglass huts. A sketch of a typical SEAFRAME station is shown in Figure 2.

Water level sensors include:

1. Primary water level using a Bartex 'AQUATRAK' acoustic-in-air sensor,
2. Secondary water level (or backup) using a Druck pressure transducer mounted close to the seabed, and
3. Tertiary water level using a Vega-puls62 radar sensor mounted above the water.



Figure 2. Schematic diagram of a SEAFRAME sea level monitoring station.

Observation Network Upgrade Project

The Observation Network Upgrade Project (ONUP) upgraded all Pacific SEAFRAME stations from March 2011 to December 2013 with modernised TELMET data loggers, real-time satellite

communications and additional radar-type water level sensors. The dates of installation of the original SUTRON loggers and dates of the station upgrades are given in Table 3.

Table 3. Schedule of SEAFRAME station equipment upgrades.

Location	Latitude	Longitude	SUTRON Installation Date	TELMET Upgrade Date
Cook Is	21°12'17.1"S	159°47'5.2"W	Feb 1993	Oct 2012
Tonga	21°8'12.5"S	175°10'50.5"W	Jan 1993	Mar 2011
Fiji	17°36'17.7"S	177°26'17.7"E	Oct 1992	Jun 2011
Vanuatu	17°45'19.2"S	168°18'27.7"E	Jan 1993	May 2012
Samoa	13°49'36.4"S	171°45'40.7"W	Feb 1993	Aug 2011
Tuvalu	8°30'8.9"S	179°11'42.6"E	Mar 1993	Nov 2013
Kiribati	1°21'54.2"N	172°55'58.8"E	Dec 1992	Oct 2011
Nauru	0°31'45.9"S	166°54'36.2"E	Jul 1993	Jul 2013
Solomon Is.	9°25'44.1"S	159°57'19.3"E	Jul 1994	Nov 2011
PNG	2°2'31.5"S	147°22'25.6"E	Sep 1994	Aug 2012
FSM	6°58'49.9"N	158°12'0.8"E	Dec 2001	Apr 2013
Marshall Is.	7°6'21.7"N	171°22'22.1"E	May 1993	Dec 2012

Tide Prediction Extension Project

A tide prediction extension project is aimed at extending the network of locations at which accurate tide predictions are available. Activities include the deployment of portable tide gauges in strategic locations, with the intention of observing sea levels for a sufficient length of time, ideally 1 year, to allow a thorough analysis of astronomical tides.

A portable tide gauge was installed at Neiafu, in the Vava'u group of islands in Tonga, in September 2013 and efforts to link the sea-level data from the portable gauge to a local land reference via levelling survey were also made.

Further Information

Online Resources

COSPPac Web site: <http://www.bom.gov.au/cosppac/>

PSLMP Web site: <http://www.bom.gov.au/pacific/projects/pslm/index.shtml>

ENSO Wrap-Up - El Niño / La Niña information: <http://www.bom.gov.au/climate/enso/>

Geoscience Australia South Pacific Regional GNSS Network (Levelling Survey and Continuous GPS Monitoring):
<http://www.ga.gov.au/earth-monitoring/geodesy/gnss-networks.html>

Acknowledgement

The Monthly Data Report is prepared by the Bureau of Meteorology under the Pacific Sea Level Monitoring (PSLM) Project, Climate and Oceans Support Program in the Pacific (COSPPac).

Further enquiries about the Monthly Data Report may be made to:

Bureau of Meteorology
PO Box 421
Kent Town SA 5067
Tel: (+618) (08) 8366 2730
Email: ntc@bom.gov.au
Website: <http://www.bom.gov.au/oceanography/projects/ntc/ntc.shtml>

Please also note the following:

While care has been taken in the collection, analysis, and compilation of the data, it is supplied on the condition that the Commonwealth of Australia shall not be liable for any loss or injury whatsoever arising from the use of the data. Copyright for material contained in this document is held by the Commonwealth of Australia.



Appendix 1: SEAFRAME Data Figures

SIX MINUTE SEA LEVEL OBSERVATIONS (m)

May 2016 (UTC)

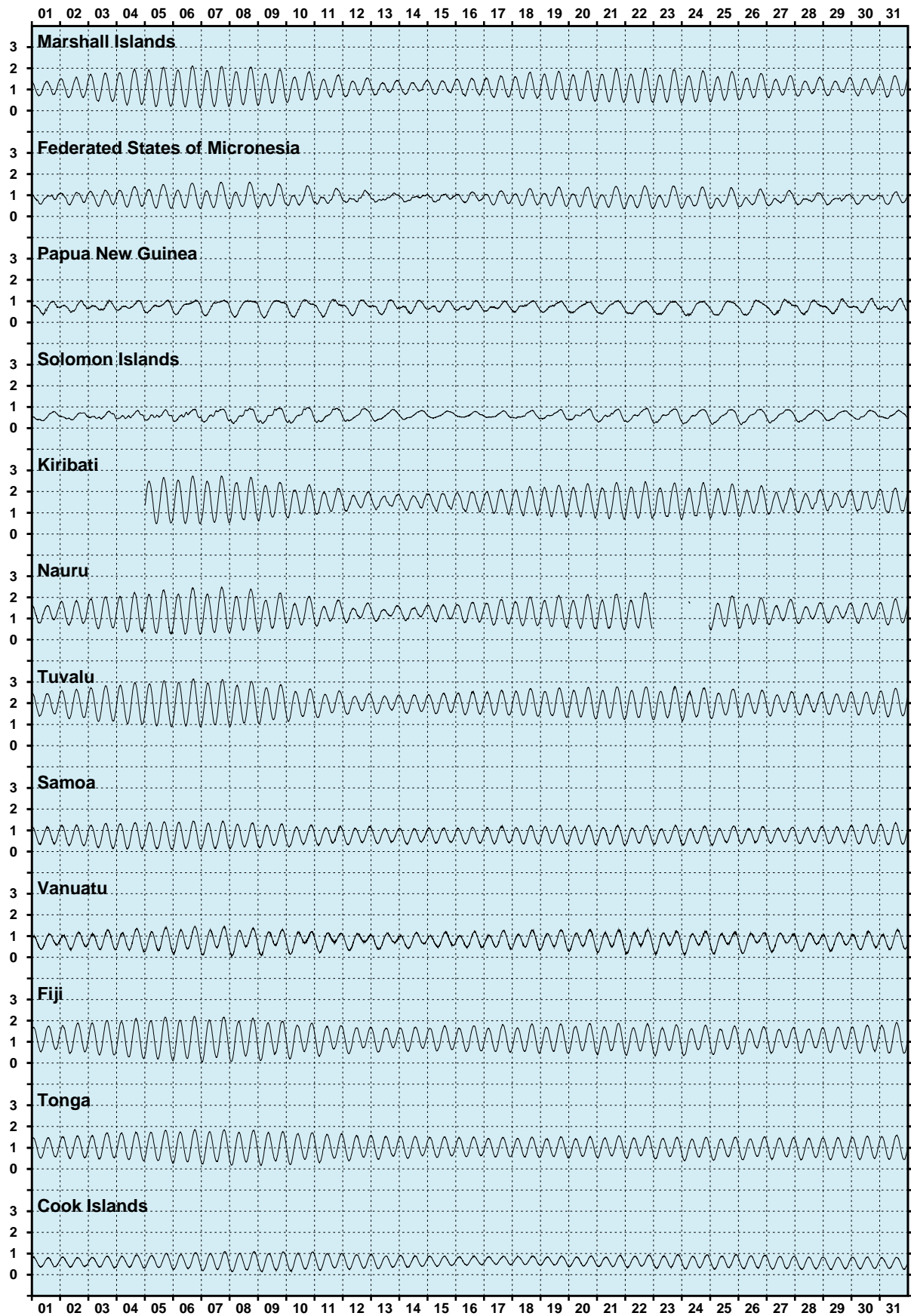


Figure 3. Sea level observations during May 2016.



SIX MINUTE RESIDUAL WATER LEVELS (m)

May 2016 (UTC)

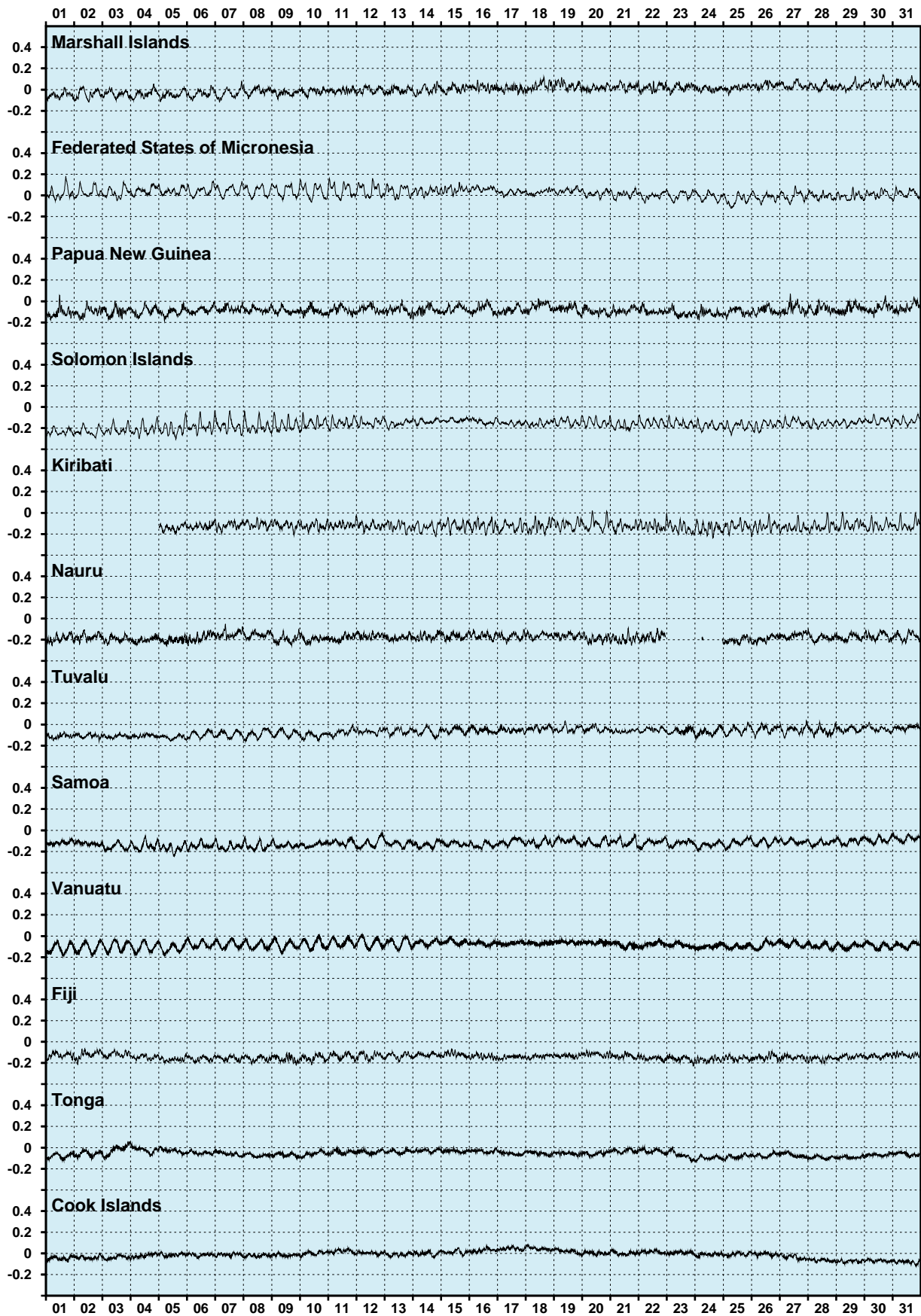


Figure 4. Residual sea levels during May 2016.

SIX MINUTE RESIDUALS ADJUSTED FOR BAROMETRIC PRESSURE (m)

May 2016 (UTC)

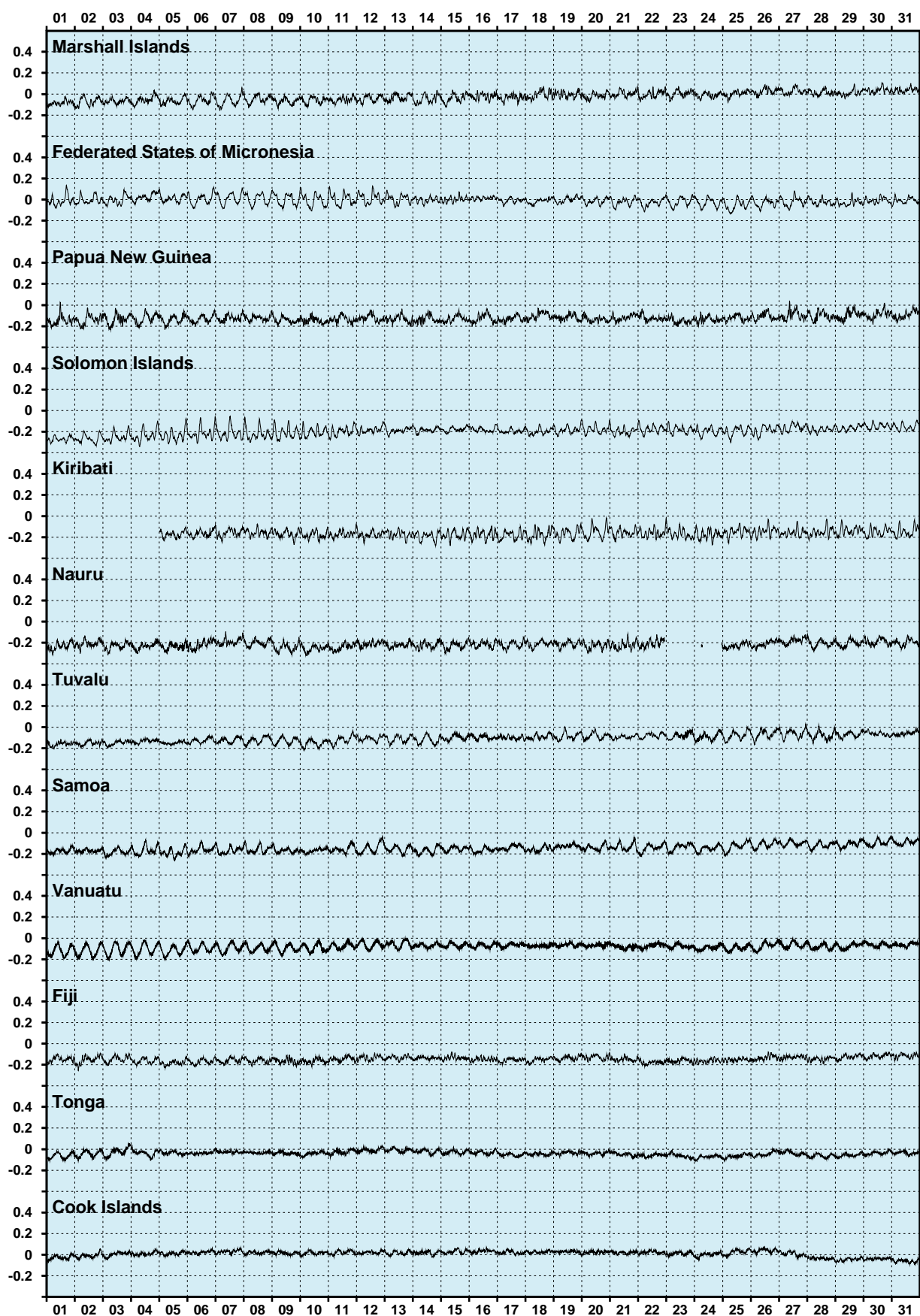


Figure 5. Residual sea levels adjusted for barometric pressure during May 2016.



HOURLY WIND SPEEDS (m/s)

May 2016 (UTC)

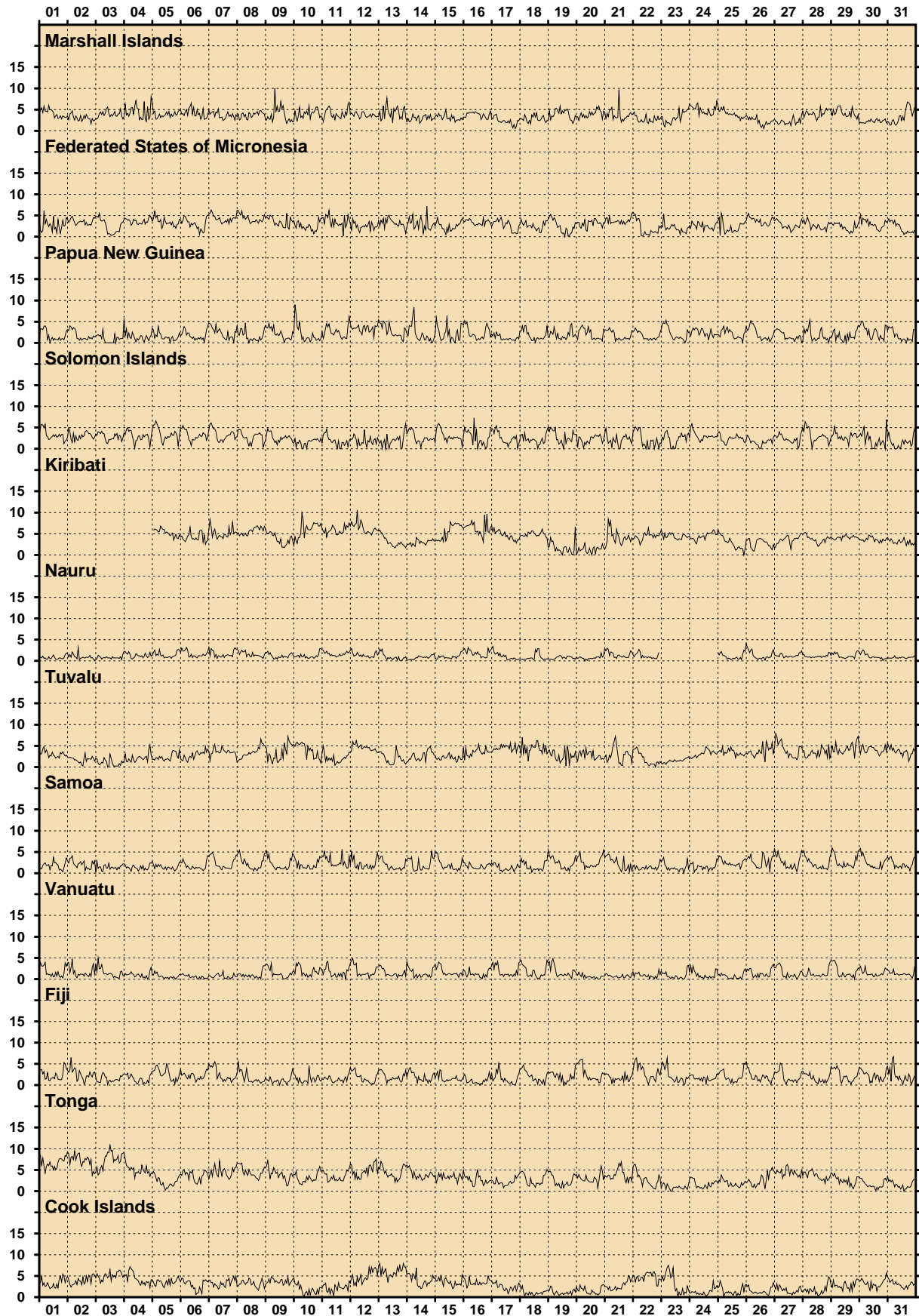


Figure 6. Wind speeds during May 2016.

HOURLY MAXIMUM WIND GUSTS (m/s)

May 2016 (UTC)



Figure 7. Wind gusts during May 2016.



HOURLY INCIDENT WINDS (m/s, °True)

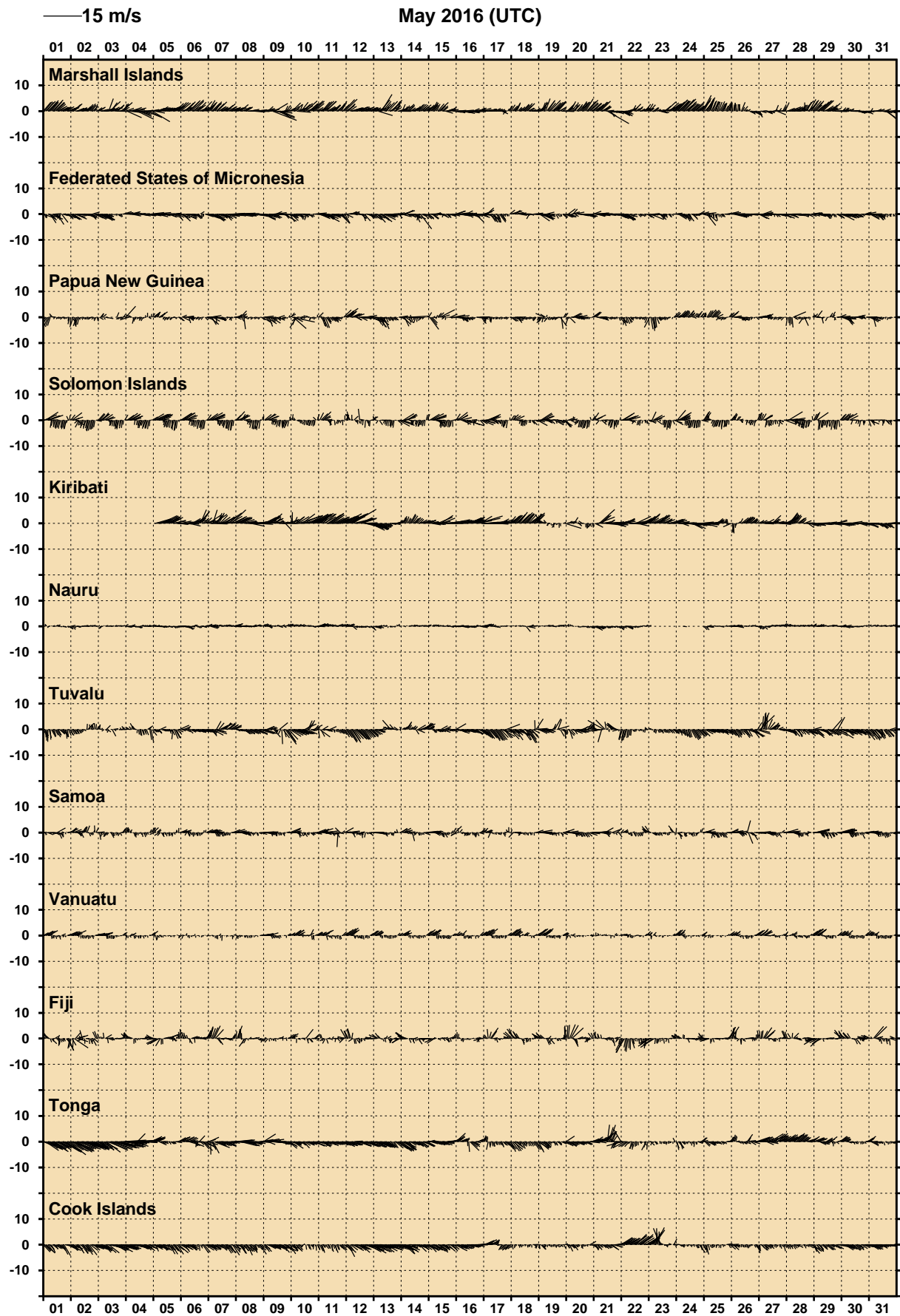


Figure 8. Incident winds during May 2016

HOURLY AIR TEMPERATURES (°C)

May 2016 (UTC)

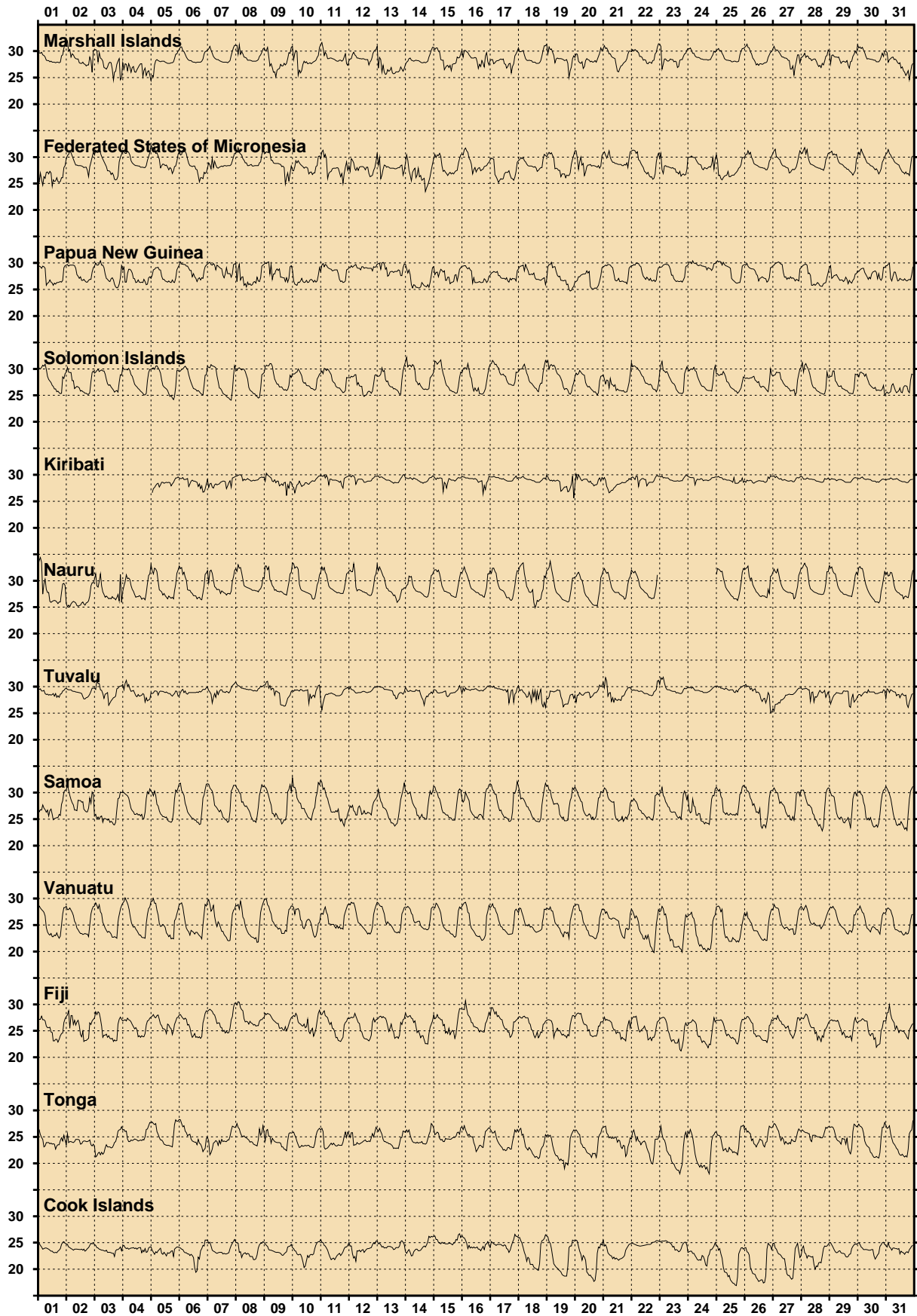


Figure 9. Air temperatures during May 2016.



HOURLY WATER TEMPERATURES (°C)

May 2016 (UTC)

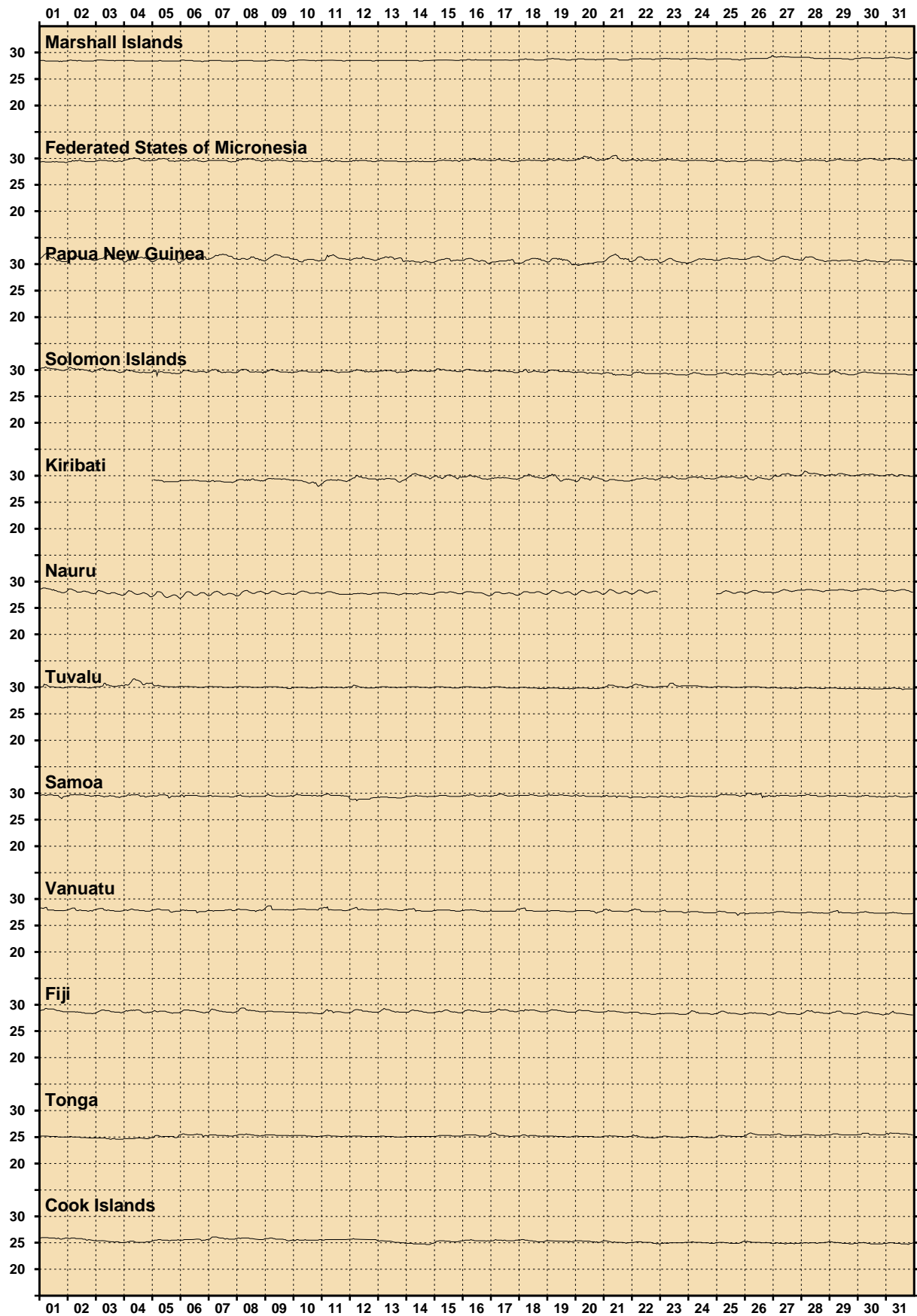


Figure 10. Water temperatures during May 2016.

HOURLY BAROMETRIC PRESSURE (hPa)

May 2016 (UTC)

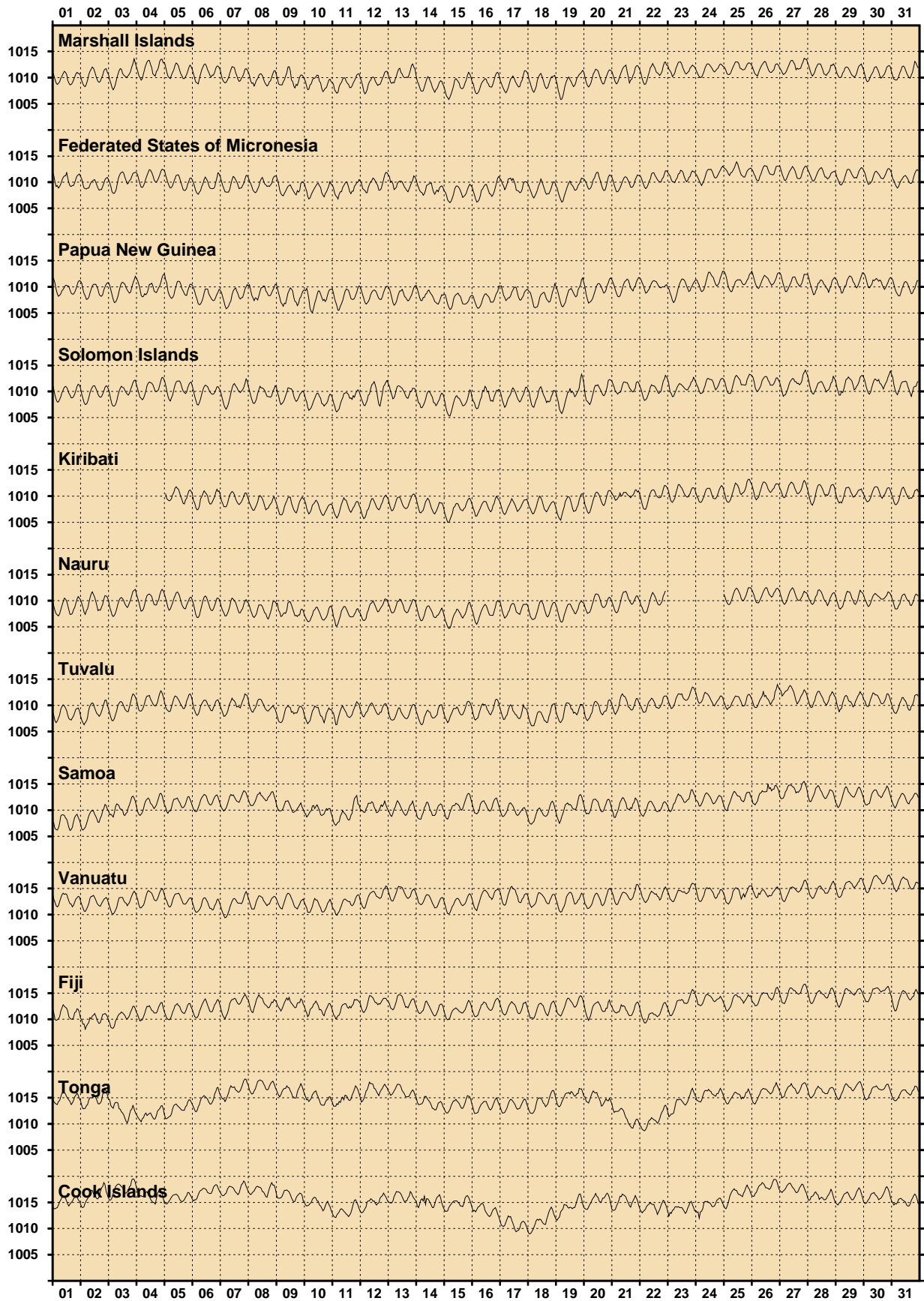


Figure 11. Barometric pressures during May 2016.



COMPARISON OF MAY 2016 MAX,MIN AND MEAN WITH LONG-TERM MAY VALUES

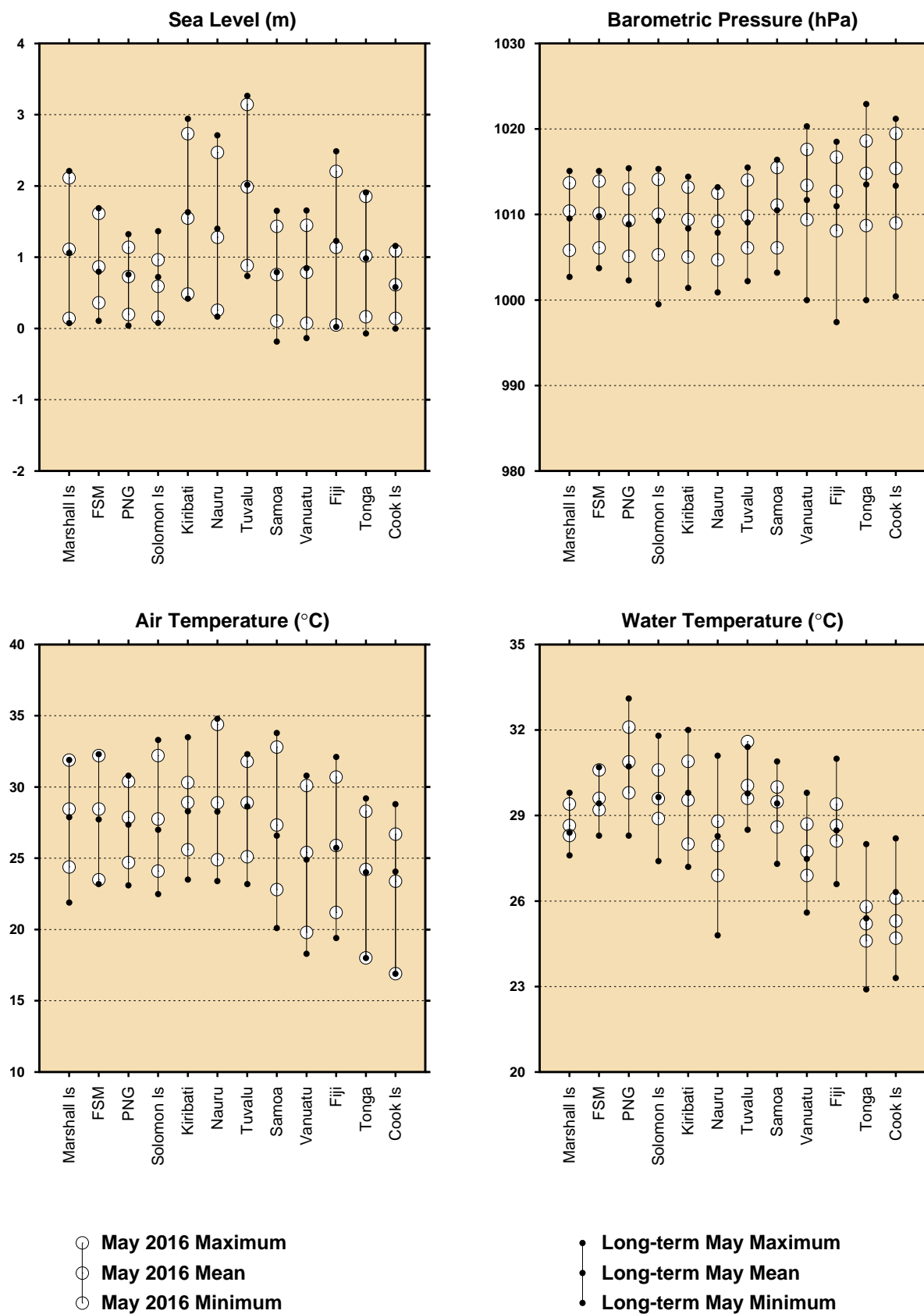


Figure 12. Comparison of May 2016 data with long term May values.

MONTHLY MEAN SEA LEVELS THROUGH MAY 2016 (m) **(The zero line represents mean sea level)**

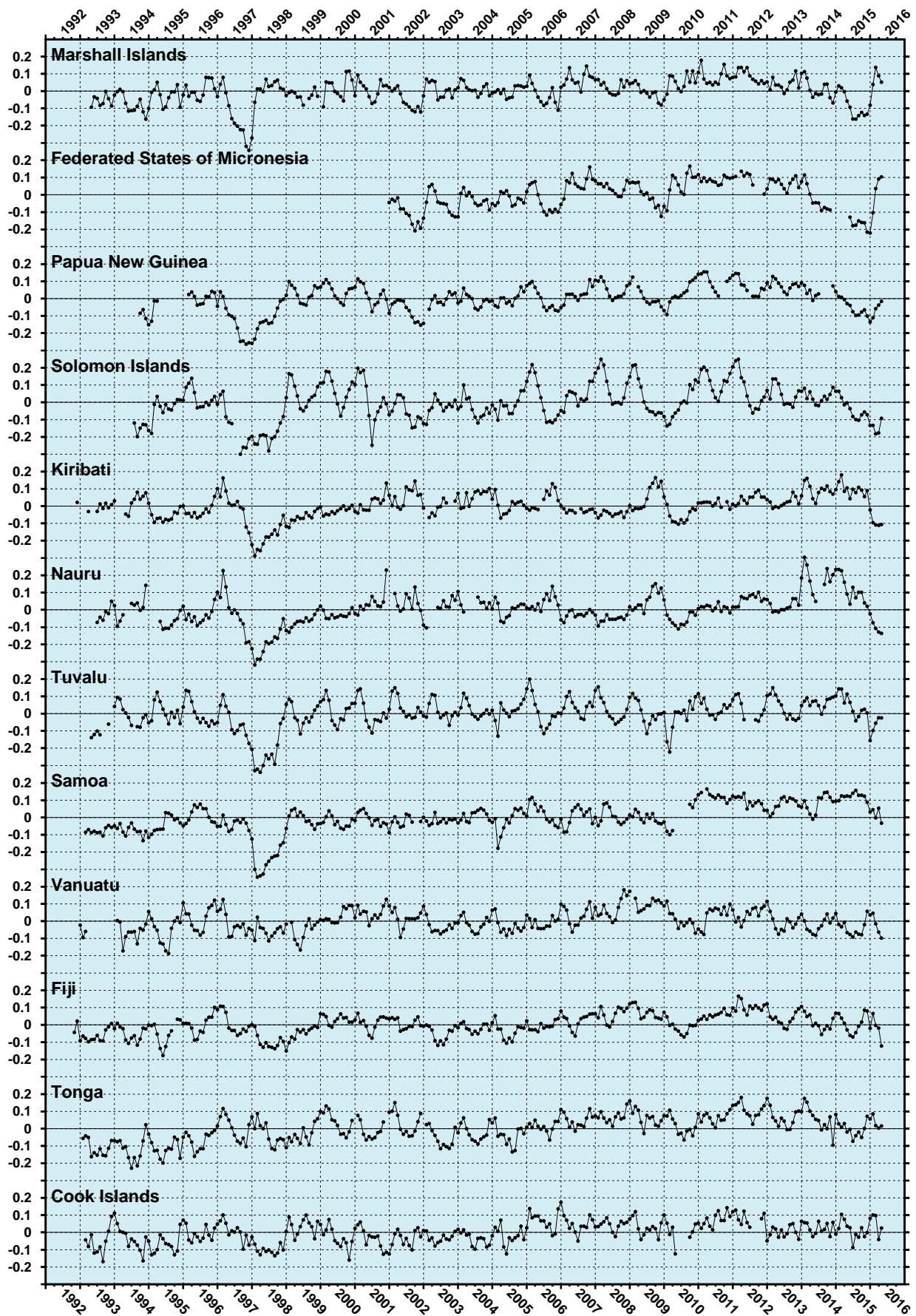


Figure 13. Monthly mean sea levels to May 2016.



MONTHLY MEAN BAROMETRIC PRESSURES THROUGH MAY 2016 (hPa)

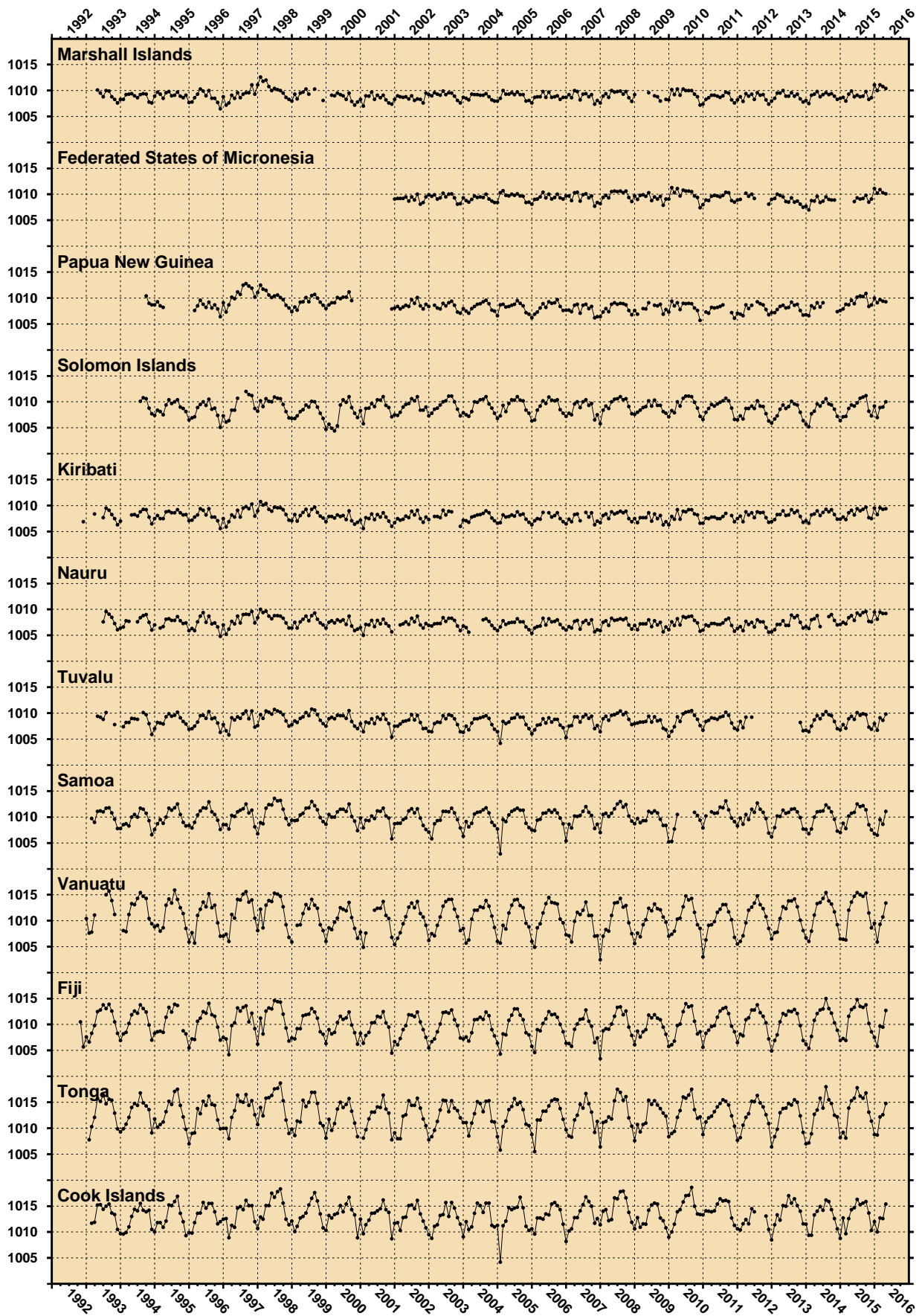


Figure 14. Monthly mean barometric pressures to May 2016.

MONTHLY MEAN WATER TEMPERATURES THROUGH MAY 2016 (°C)

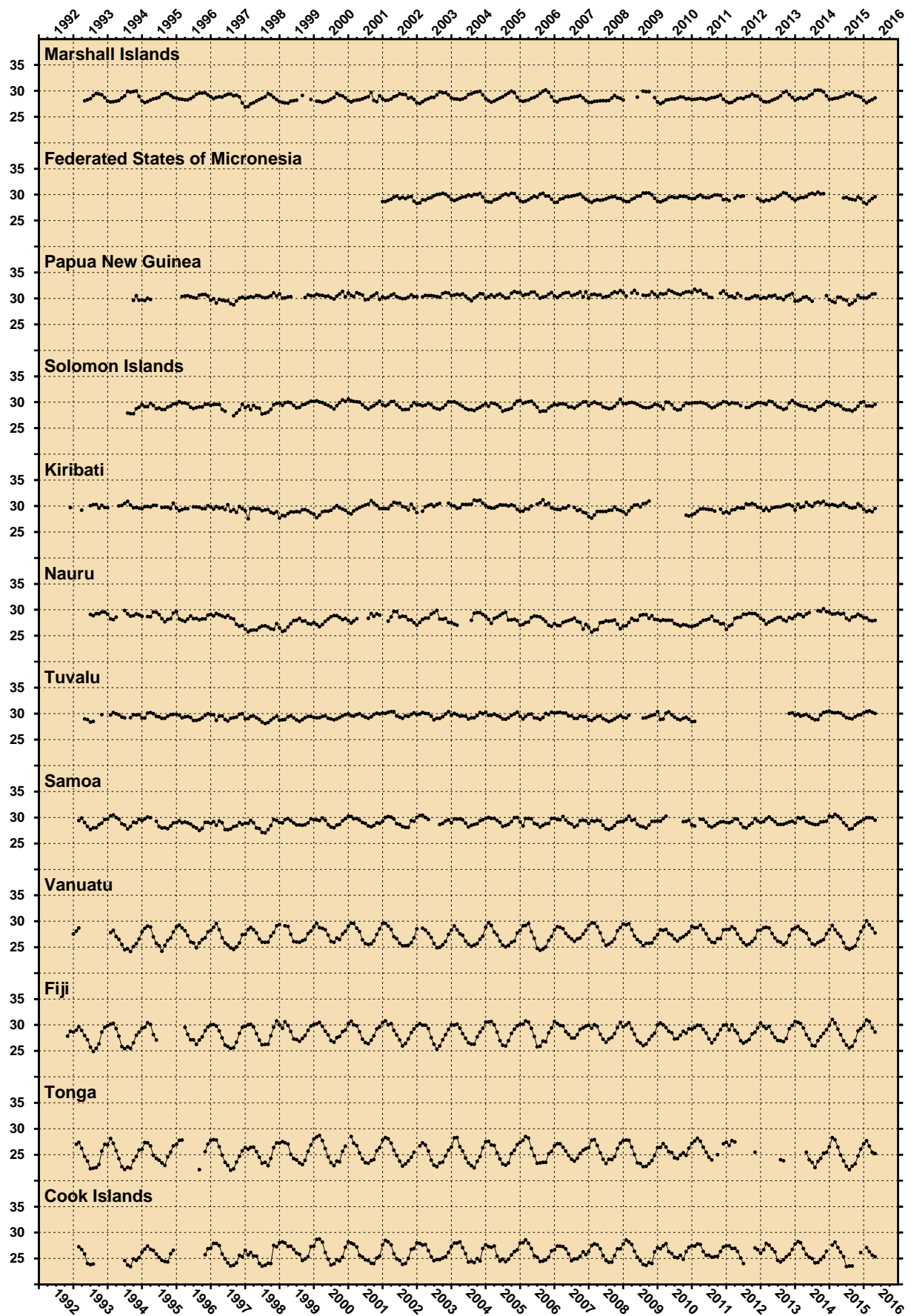


Figure 15. Monthly mean water temperatures to May 2016.



MONTHLY MEAN AIR TEMPERATURES THROUGH MAY 2016 (°C)

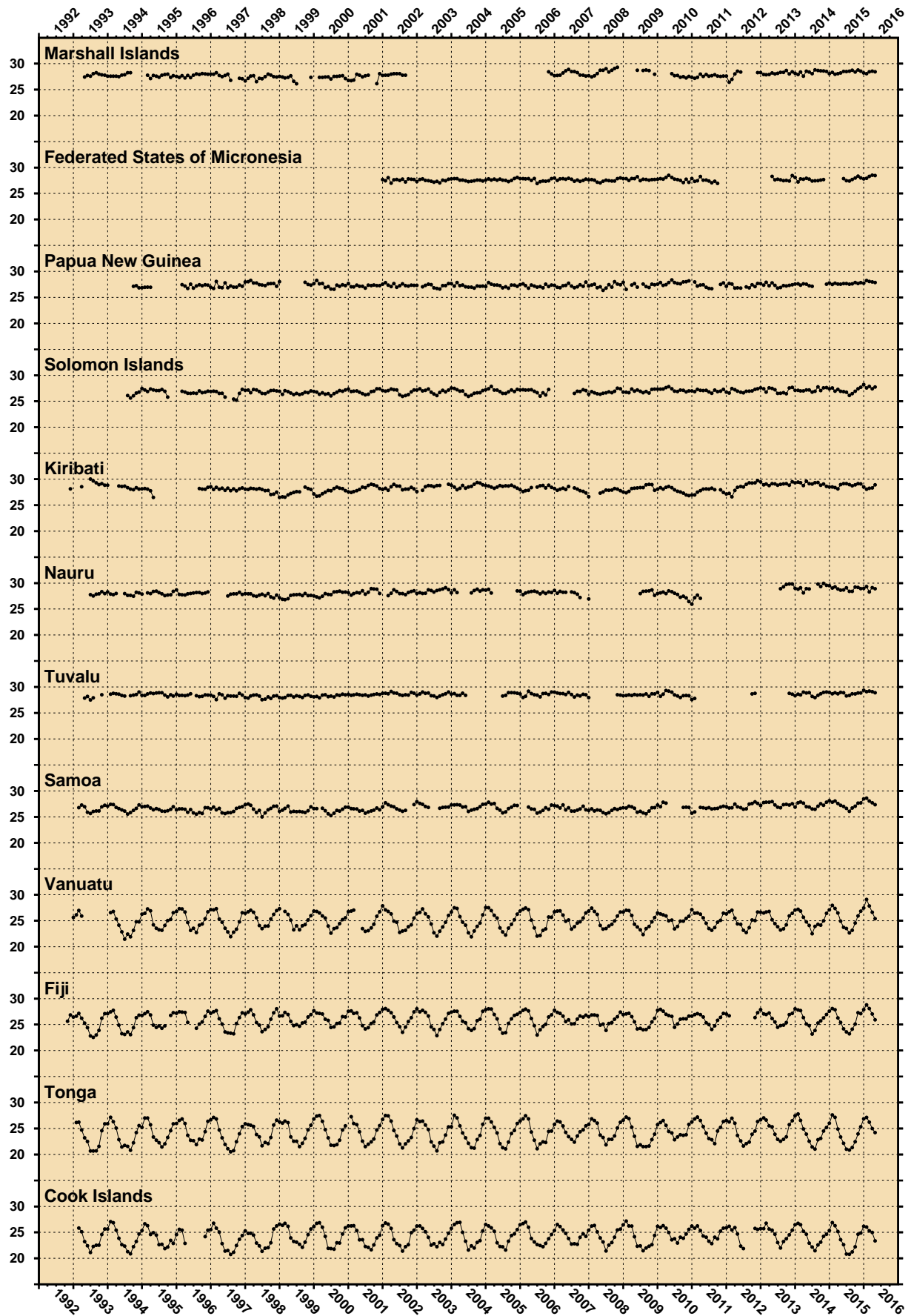


Figure 16. Monthly mean air temperatures to May 2016.

SEA LEVEL ANOMALIES THROUGH MAY 2016 (m)

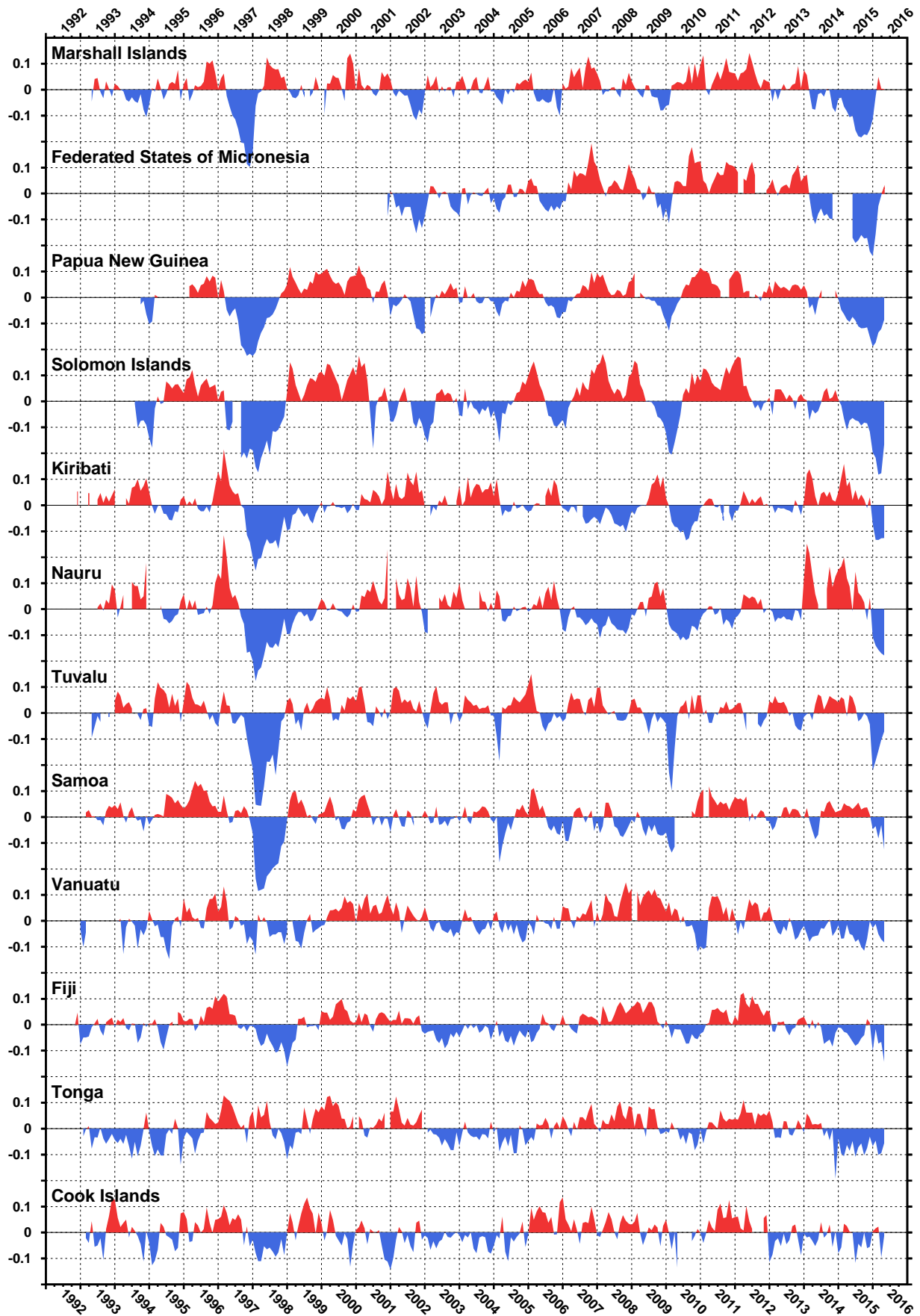


Figure 17. Monthly sea level anomalies to May 2016.



BAROMETRIC PRESSURE ANOMALIES THROUGH MAY 2016 (hPa)

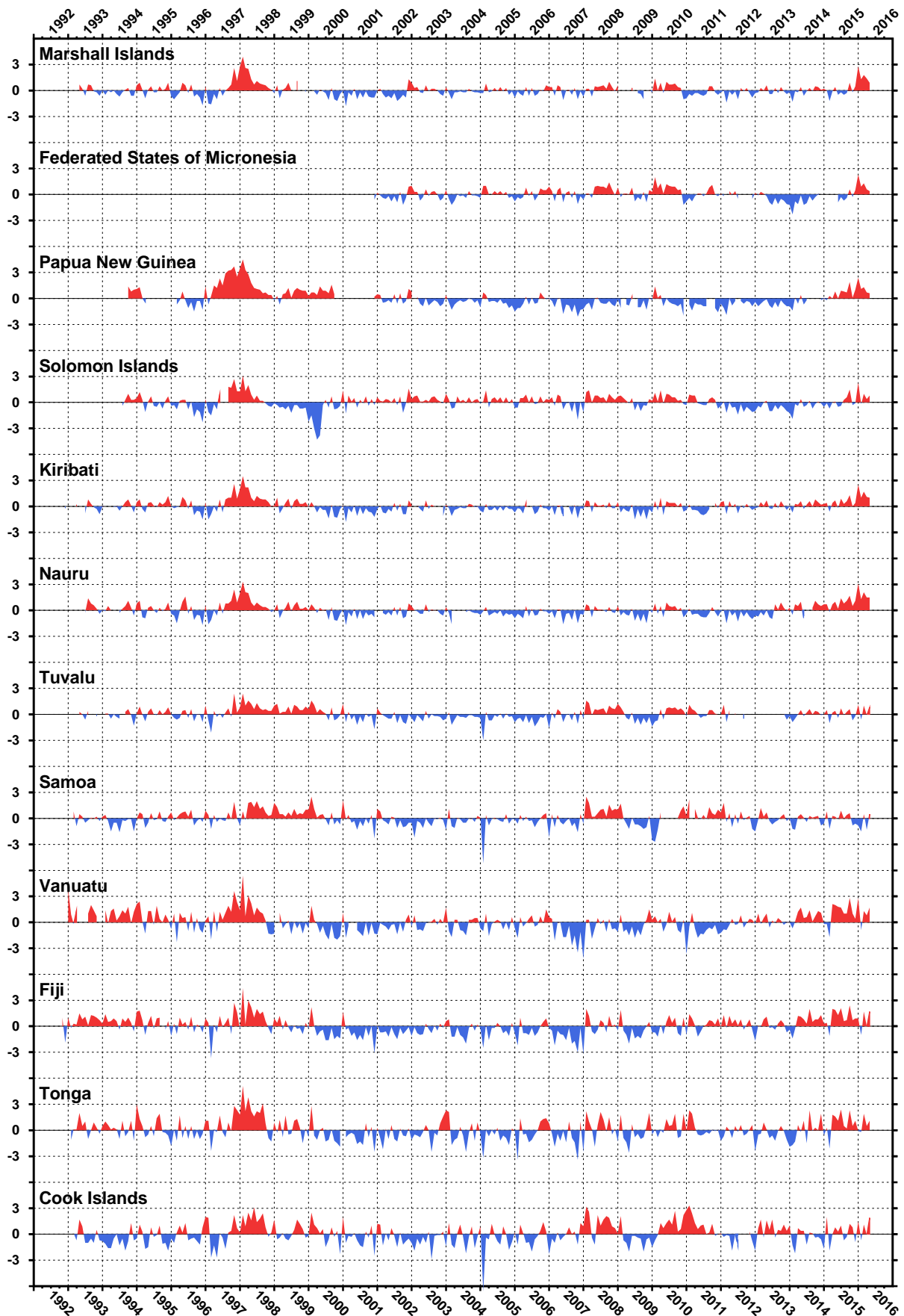


Figure 18. Monthly barometric pressure anomalies to May 2016.

WATER TEMPERATURE ANOMALIES THROUGH MAY 2016 (°C)

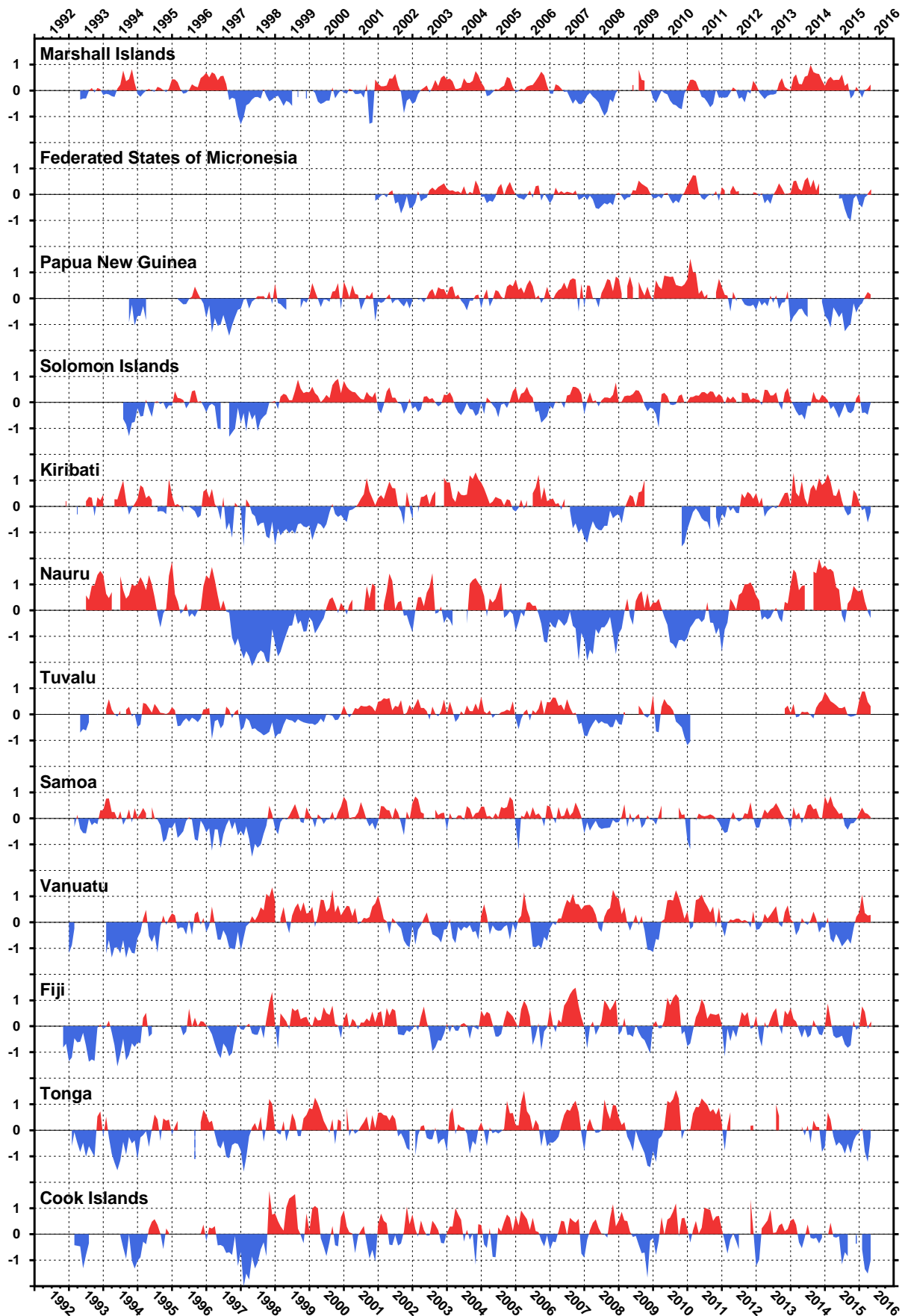


Figure 19. Monthly water temperature anomalies to May 2016.



AIR TEMPERATURE ANOMALIES THROUGH MAY 2016 (°C)

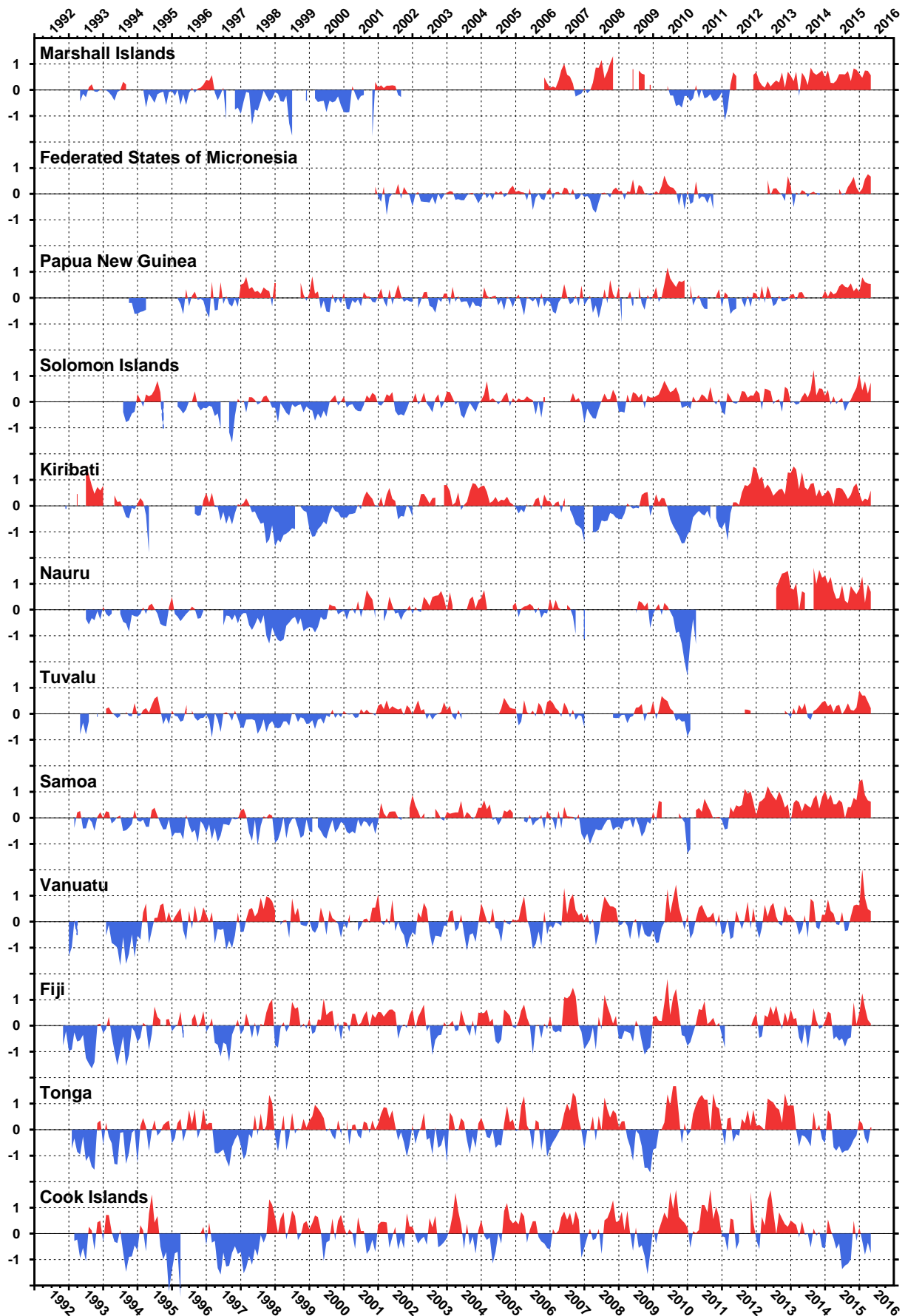


Figure 20. Monthly air temperature anomalies to May 2016.

MONTHLY SEA LEVEL DATA RETURN THROUGH MAY 2016 (%)

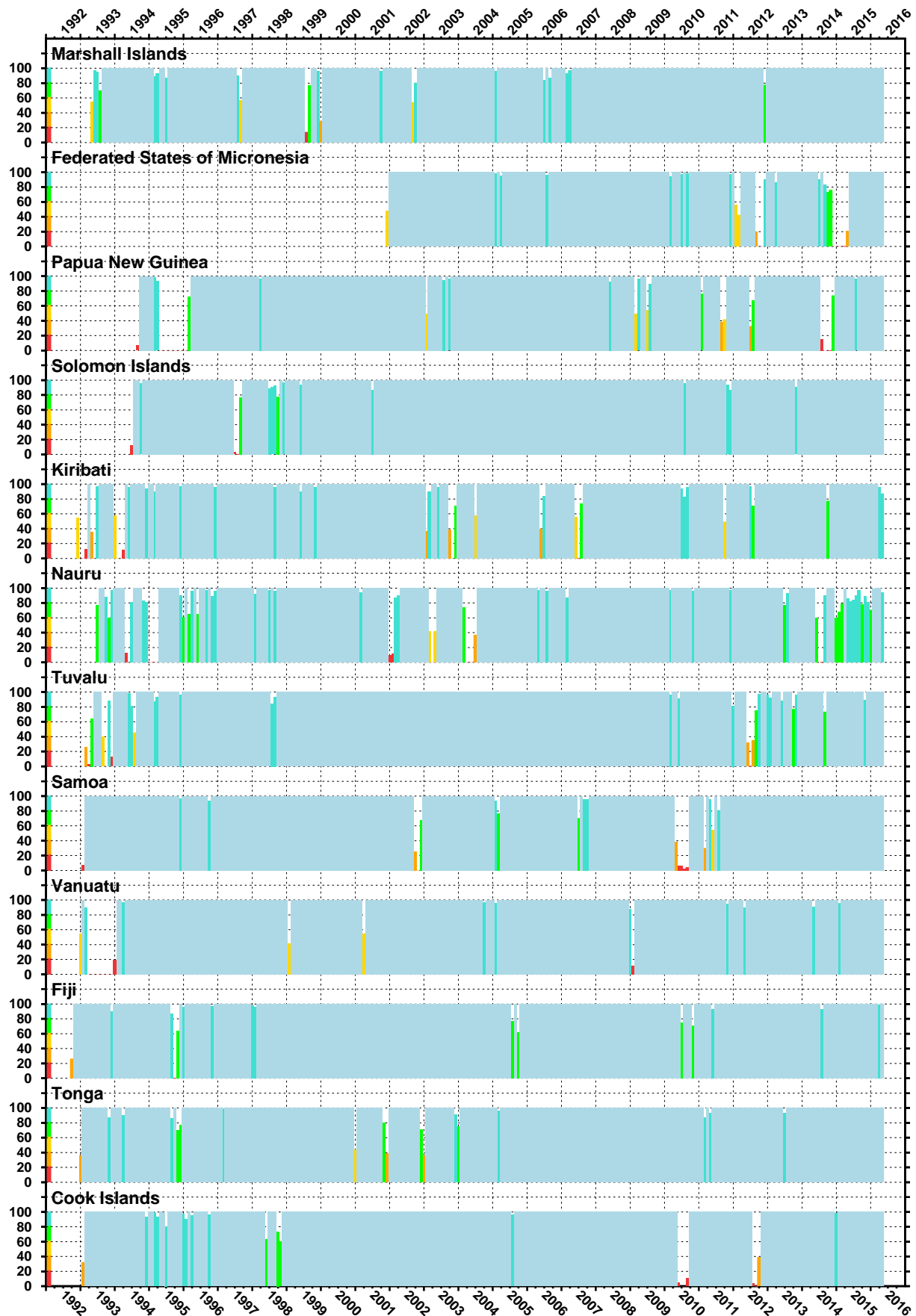


Figure 21. Sea level data return.

