



Climate and Oceans Support  
Program in the Pacific



Australian Government  
Bureau of Meteorology

# Monthly Data Report - October 2018

---

Pacific Sea Level Monitoring Project





**Australian Government**  
**Bureau of Meteorology**

© Commonwealth of Australia 2018

This work is copyright. Apart from any use as permitted under the *Copyright Act 1968*, no part may be reproduced without prior written permission from the Bureau of Meteorology. Requests and inquiries concerning reproduction and rights should be addressed to the Publishing Unit, Bureau of Meteorology, GPO Box 1289, Melbourne 3001. Requests for reproduction of material from the Bureau website should be addressed to AMDISS, Bureau of Meteorology, at the same address.

Published by Bureau of Meteorology



# Table of Contents

List of Tables .....	iv
List of Figures .....	iv
Executive Summary .....	1
Introduction .....	2
Sea Level and Climate .....	4
October SEAFRAME Data .....	5
Monthly Sea Level and Environmental Data.....	5
Monthly Means and Anomalies.....	7
Overall Rate of Movement in Sea Level .....	8
Instrument Performance .....	9
SEAFRAME Stations.....	10
Tide Prediction Extension Project.....	11
Further Information.....	12
Online Resources .....	12
Acknowledgement .....	12
Appendix 1: SEAFRAME Data Figures .....	13

## List of Tables

Table 1. Updated overall rates of sea level movement based on SEAFRAME data from installation through October 2018.....	8
Table 2. Rates of sea level data return.....	9

## List of Figures

Figure 1. Pacific Sea Level Monitoring Network of SEAFRAME stations.....	3
Figure 2. Schematic diagram of a SEAFRAME sea level monitoring station.....	10
Figure 3. Sea level observations during October 2018.....	14
Figure 4. Residual sea levels during October 2018.....	15
Figure 5. Residual sea levels adjusted for barometric pressure during October 2018. ....	16
Figure 6. Wind speeds during October 2018.....	17
Figure 7. Wind gusts during October 2018.....	18
Figure 8. Incident winds during October 2018.....	19
Figure 9. Air temperatures during October 2018. ....	20
Figure 10. Water temperatures during October 2018. ....	21
Figure 11. Barometric pressures during October 2018.....	22
Figure 12. Comparison of October 2018 data with long term October values. ....	23
Figure 13. Monthly mean sea levels to October 2018. ....	24
Figure 14. Monthly mean barometric pressures to October 2018. ....	25
Figure 15. Monthly mean water temperatures to October 2018. ....	26
Figure 16. Monthly mean air temperatures to October 2018. ....	27
Figure 17. Monthly sea level anomalies to October 2018.....	28
Figure 18. Monthly barometric pressure anomalies to October 2018.....	29
Figure 19. Monthly water temperature anomalies to October 2018.....	30
Figure 20. Monthly air temperature anomalies to October 2018. ....	31
Figure 21. Sea level data return. ....	32



# Executive Summary

This summary, and the overview that follows, is intended to provide a synopsis of the recent month's observations in addition to longer-term variations over the life of the project to date.

## October 2018

- The SEAFRAME network continued to collect high-quality sea level and associated meteorological information for monitoring climate variability and climate change.
- The overall rate of sea level data returned from the network during October was 100.0%. The ancillary record of meteorological information endured outages to air and water temperature sensors at some stations.
- Monthly mean sea levels were 5-10 cm higher than normal at PNG, Nauru, Kiribati, Fiji and Marshall Islands, which helped underpin a record-high October high tide at PNG.
- Monthly mean air and water temperatures were generally warmer than normal across the network.

# Introduction

Welcome to the October 2018 Monthly Data Report for the Pacific Sea Level Monitoring Project (PSLMP). The report details the month by month operation of the SEAFRAME monitoring stations in the Pacific, including operational problems with the network or with satellite communications, the occurrence of abnormal sea level events and the interpretation of sea level fluctuations in the context of related astronomical tide, weather and climate variations.

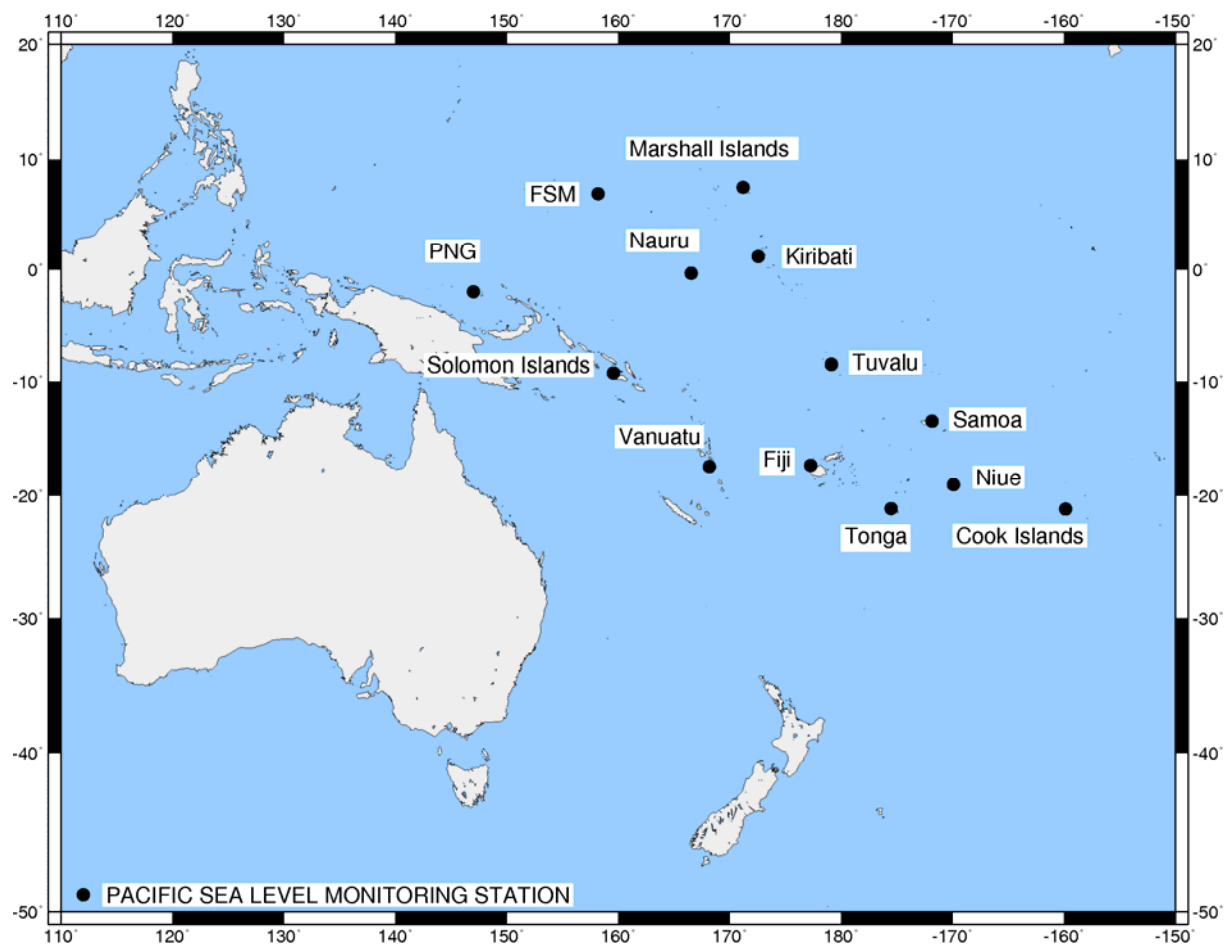
The PSLMP continues the work of the South Pacific Sea Level and Climate Monitoring Project (SPSLCMP) under a wider Climate and Oceans Support Program in the Pacific (COSPPac) initiative. The SPSLCMP was originally developed as an Australian response to concerns raised by the member countries of the South Pacific Forum over the potential impacts of global warming on climate and sea levels in the Pacific with the principal objective of 'the provision of an accurate long-term record of sea level in the South Pacific for partner countries and the international scientific community which enables them to respond to and manage related impacts'.

The project's sea level monitoring network consists of 13 SEAFRAME stations providing wide coverage across the Pacific Islands Forum region (Figure 1). The SEAFRAME stations not only measure sea level, but also observe a number of "ancillary" variables - air and water temperatures, wind speed, wind direction and atmospheric pressure.

An associated geodetic measurement program, implemented by Geosciences Australia, supports levelling surveys to first order, to determine shifts in the vertical of the sea level sensors due to local land movement, as well as continuous Global Positioning System (CGPS) stations to determine the vertical movement of the land with respect to the International Terrestrial Reference Frame.

Observations collected by the sea level monitoring network are routinely processed into a range of quality-controlled data products. The monthly data report is the primary source of up-to-date information relating to these data products.





**Figure 1. Pacific Sea Level Monitoring Network of SEAFRAME stations.**

# Sea Level and Climate

Astronomical tides and weather conditions are largely responsible for daily perturbations in sea level, but over monthly, seasonal and longer timescales sea levels in the tropical Pacific are largely influenced by fluctuations in climate and ocean heat content across the Pacific.

The El Niño – Southern Oscillation climate cycle plays a key role in sea level variability. During El Niño sea levels are generally lower than normal across the western equatorial Pacific, as measured by the project's sea level network, in response to weaker than normal easterly Trade Winds, cooler than normal ocean temperatures and higher than normal barometric pressures in this region. On the other hand during La Niña the easterly Trade Winds are typically stronger than normal, ocean temperatures are warmer than normal and barometric pressures are lower than normal across the western Pacific, which often results in higher than normal sea levels at many of the project stations.

The sea level stations at PNG, Solomon Islands, Tuvalu and Samoa lie along a zone of convergent winds, known as the South Pacific Convergence Zone. Sea levels at these stations may become higher or lower than normal depending on the strength of these convergent winds or the shifting position of the convergence zone relative to its climatological mean. The sea level stations at Nauru and Kiribati lie very close to the equator and can both be influenced by sea level signals propagating along the equatorial waveguide.

A summary of recent and past climate conditions across the equatorial Pacific is provided by the Bureau of Meteorology in its monitoring of the El Niño – Southern Oscillation cycle at <http://www.bom.gov.au/climate/enso/>

Further climate information for Pacific Island countries is provided by the Climate and Ocean Monitoring and Prediction (COMP) Project under the Climate and Oceans Support Program in the Pacific (COSPPac).





# October SEAFRAME Data

## Monthly Sea Level and Environmental Data

The observed sea levels (Figure 3) are dominated by the daily oscillations of the tide. In most cases, the tide rises and falls twice per day (semi-diurnal), but at PNG and the Solomon Islands the tide tends to have a single high and low per day (diurnal). Where the tides follow a semi-diurnal pattern the greatest tidal variations are called spring tides, which tend to occur around the time of the new and full moons. A new moon fell on the 9<sup>th</sup> of October while a full moon fell on the 24<sup>th</sup> of October.

Gaps in the data are the result of instrumental errors or data retrieval problems and are discussed under Instrument Performance.

The residuals (Figure 4) are the differences between the observed sea levels and the astronomical tidal predictions. They highlight non-tidal sea level fluctuations, such as those due to the effects of weather or tsunamis.

Tropical cyclones can produce storm surges where the combination of low barometric pressure and strong winds raise sea levels well above the predicted astronomical tides for a period of a day or more.

The non-tidal sea level fluctuations can be amplified or sustained by the shape of the harbour in which the gauge is located. Some of the SEAFRAME stations are located in harbours that exhibit 'sloshing' under certain conditions (a phenomenon referred to as a seiche), such as at PNG on ebbing tides or when the wind suddenly changes strength

or direction, at FSM during smaller neap tides and at Nauru during strong westerly winds.

The sea level residuals at all stations, to some degree, exhibit semi-diurnal or diurnal fluctuations, which last a few days or weeks and then disappear. If these fluctuations were to persist they would form part of the astronomical tide prediction and thus not appear as residuals. Consequently semi-diurnal and diurnal residual fluctuations will always be transient in nature.

The barometrically corrected residuals (Figure 5) have had the effect of atmospheric pressure fluctuations removed from the sea level residuals of Figure 4. The rule of thumb for the 'inverse barometer effect' is that a 1-hPa fall in the barometer, if sustained over a day or more, produces a 1-cm rise in the local sea level (within the area beneath the low pressure system).

The winds, temperatures and barometric pressures are plotted in Figure 6 through Figure 11. The incident winds in Figure 8 follow the meteorological convention, that is, they point in the direction the wind is coming from. For example, the winds at Cook Islands prevailed from the southeast for much of the month.

Air and water temperatures (Figure 9 and Figure 10) are plotted using the same vertical scale for the purpose of comparison. The air temperatures are seen to fluctuate over a much wider range than the water temperatures. At some sites (e.g. Solomon

Islands) the water temperature shows almost no variation, although the air temperature varies by several degrees between night and day. At Nauru a twice-daily fluctuation in water temperature is sometimes observed that is related to interactions between tides and terrestrial (land-based) water discharging into the wharf area. The water temperature fluctuations there are usually more pronounced during the larger spring tides.

Barometric pressures (Figure 11) tend to fluctuate by around 3 hPa twice-daily at all stations as a result of atmospheric tides, which are largest in the tropical regions and reduce to near zero toward the poles. The longer-term barometric pressure fluctuations that occur over periods of days to weeks are due to passing weather systems. These fluctuations tend to be larger at sites farther away from the equator such as Cook Islands and Tonga.

The monthly sea level and ancillary data are put into perspective by Figure 12. In this figure, if an open circle falls above (below) a solid dot, a new maximum (minimum) for the particular month has

been set. The data sets only include Pacific Sea Level Monitoring Project data, which have been collected since October 1992 when the first station was installed at Fiji. Two of the stations have shorter records than the rest of the network; Federated States of Micronesia (FSM) was installed in December 2001 and Niue was installed in August 2015.

A record-high October sea level of 1.312 m was observed at PNG. A record-high October air temperature was observed at Fiji (31.1 °C) while record-low October air temperature was observed at Vanuatu (17.2 °C). Record-high October water temperatures were observed at Marshall Islands (31.7 °C), PNG (33.4 °C), Tuvalu (31.9 °C) and Niue (27.8 °C). A record-high October barometric pressure was observed at Cook Islands (1023.2 hPa).

Further sea level and meteorological statistical information is available at <http://www.bom.gov.au/oceanography/projects/spslc/mp/data/monthly.shtml>



## Monthly Means and Anomalies

Figure 13 through Figure 16 show the monthly means, or simple arithmetic averages, for sea level, barometric pressure, water temperature and air temperature. Averaging over a month removes tidal and daily fluctuations, which helps reveal the seasonal, annual and longer-period variations in the records. Tuvalu, for example, normally experiences an annual sea level cycle of about 0.2 metres, reaching a peak around February or March. One effect of the El Niño of 1997-1998 was very low sea levels which disrupted the annual sea level cycle at many of the SEAFRAME stations (Figure 13).

Figure 17 through Figure 20 show the monthly mean sea level, barometric pressure, air temperature and water temperature anomalies. The sea level anomalies are the monthly-averaged residuals after tides, annual and semi-annual seasonal cycles and linear slope have been removed, by way of a harmonic tidal analysis of the complete record. The annual sea level cycle at Tuvalu (which has the largest consistent annual cycle) is quite noticeable in Figure 13 but less apparent in Figure 17. By removing the seasonal cycles, the anomalies help to bring out irregular features, such as lower than normal sea levels across the region during the 1997/98 El Niño.

Monthly mean sea levels for October 2018 were higher than normal at PNG (by +10 cm), Nauru (+8 cm), Kiribati (+7 cm), Fiji (+6 cm) and Marshall Islands (+6 cm), but were near normal for this time of the year elsewhere (Figure 17).

The anomalies of barometric pressure, water and air temperature are determined in the same manner as the sea level anomalies, except the linear slope is not calculated.

Higher than normal barometric pressures were observed at SEAFRAME stations during the 1997-1998 El Niño and to a lesser extent the 2015-2016 El Niño (Figure 18). Monthly barometric pressures during October 2018 were slightly higher than normal across the network.

Monthly water temperatures (Figure 19) during October were warmer than normal at all stations, particularly Nauru (by +1.8 °C), Kiribati (+1.6 °C), and Marshall Islands (+1.0 °C). The observed water temperatures at PNG were also higher than normal, although the sensor began to drift notably toward the latter part of the month.

Monthly air temperatures (Figure 20) during October were also warmer than normal at most stations, including Nauru (by +1.5 °C), Marshall Islands (+0.9 °C), Kiribati (+0.9 °C), Tonga (+0.7 °C), Samoa (+0.7 °C), Solomon Islands (+0.6 °C), Tuvalu (+0.6 °C), Vanuatu (+0.6 °C) and Fiji (+0.5 °C).

Over the duration of the record the air temperature anomalies generally (although not always) follow the water temperature anomalies, which is an indication of the large influence the ocean has upon the climate of the Pacific Islands.

## Overall Rate of Movement in Sea Level

Table 1 shows the overall rate of movement in sea level at individual Pacific stations based on the data so far collected at those sites. For many of the sites, the underlying data sets are now over twenty years in length.

The overall rates of movement are updated every month by calculating the linear slope during the tidal analysis of all the quality-controlled data available at individual stations. The rates are relative to the SEAFRAME sensor benchmark, whose movement relative to inland benchmarks is monitored by

Geosciences Australia. Collaborative efforts are being made to investigate vertical land movements, in order to provide corrections that are as rigorous as possible.

**Please exercise caution in interpreting the overall rates of movement of sea level – the records are too short to be inferring long-term trends and have not been corrected for land movement or other parameters that may influence the reported rates.**

**Table 1. Updated overall rates of sea level movement based on SEAFRAME data from installation through October 2018.**

Location	Latitude	Longitude	Date of first data	Rate <sup>1</sup> (mm/yr)	Change in rate from previous month (mm/yr)
Marshall Is.	7°6'21.7"N	171°22'22.1"E	May 1993	4.7	0.0
FSM	6°58'49.9"N	158°12'0.8"E	Dec 2001	6.0	-0.1
PNG	2°2'31.5"S	147°22'25.6"E	Sep 1994	5.7	+0.1
Solomon Is.	9°25'44.1"S	159°57'19.3"E	Jul 1994	4.3	0.0
Kiribati	1°21'54.2"N	172°55'58.8"E	Dec 1992	4.0	+0.1
Nauru	0°31'45.9"S	166°54'36.2"E	Jul 1993	5.2	+0.1
Tuvalu	8°30'8.9"S	179°11'42.6"E	Mar 1993	4.2	0.0
Samoa	13°49'36.4"S	171°45'40.7"W	Feb 1993	8.8	0.0
Vanuatu	17°45'19.2"S	168°18'27.7"E	Jan 1993	0.8	0.0
Fiji	17°36'17.7"S	177°26'17.7"E	Oct 1992	4.3	0.0
Tonga	21°8'12.5"S	175°10'50.5"W	Jan 1993	6.5	0.0
Cook Is	21°12'17.1"S	159°47'5.2"W	Feb 1993	3.7	0.0
Niue	19°3'9.7"S	169°55'15.2"W	Aug 2015	17.9	-1.2

<sup>1</sup>Relative to SSBM (SEAFRAME Sensor Bench Mark)



## Instrument Performance

In Figure 21, which shows sea level data return, the columns represent the percentage of quality-controlled data returned from the station each month.

Sea level data return from the network averaged out to be 100.0% during October 2018 and 96.5% overall since the start of the project (Table 2).

The ancillary meteorological and oceanographic sensors performed reasonably well during October.

The reliability of the wind monitor at Tuvalu

improved from 2<sup>nd</sup> October, but the water temperature sensor at PNG began to drift from 29<sup>th</sup> October and there were faults with the water temperature modules at Solomon Islands (since 23<sup>rd</sup> October) and Cook Islands (from 16<sup>th</sup> September 2018). At Samoa, intermittent faults with the air temperature sensor affected the readings on seven days, the longest outage being 20-23<sup>rd</sup> October.

**Table 2. Rates of sea level data return.**

Location	Installation Date	Data Return Since Installation (%)	Data Return in October 2018 (%)
Cook Is	Feb 1993	97.4	100
Tonga	Jan 1993	98.7	100
Fiji	Oct 1992	99.0	100
Vanuatu	Jan 1993	96.0	100
Samoa	Feb 1993	96.8	100
Tuvalu	Mar 1993	96.9	100
Kiribati	Dec 1992	95.6	100
Nauru	Jul 1993	92.2	100
Solomon Is.	Jul 1994	97.8	100
PNG	Sep 1994	92.1	99.7
FSM	Dec 2001	94.4	100
Marshall Is.	May 1993	98.5	100
Niue	Aug 2015	99.2	100
<b>Network Average</b>		<b>96.5</b>	<b>100</b>

# SEAFRAME Stations

Standard SEAFRAME stations now employ a TELMET (previously SUTRON) programmable data logger, water level gauges and other sensors. The data logger and associated electronics are normally housed in fibreglass huts. A sketch of a typical SEAFRAME station is shown in Figure 2.

Water level sensors include:

1. Primary water level using a Bartex 'AQUATRAK' acoustic-in-air sensor,
2. Secondary water level (or backup) using a Druck pressure transducer mounted close to the seabed, and
3. Tertiary water level using a Vega-puls62 radar sensor mounted above the water.



Figure 2. Schematic diagram of a SEAFRAME sea level monitoring station.

## Tide Prediction Extension Project

A tide prediction extension project is aimed at extending the network of locations at which accurate tide predictions are available. Activities include the deployment of portable tide gauges in strategic locations, with the intention of observing sea levels for a sufficient length of time, ideally 1 year, to allow a thorough analysis of astronomical tides.

A portable tide gauge was installed at Neiafu, in the Vava'u group of islands in Tonga, in September

2013 and was retrieved in February 2015. The data has been analysed for astronomical tides and the results will enable tide predictions to be issued into the future.

Data from a portable tide gauge deployed by the Pacific Community (SPC) at Vaitupu atoll, Tuvalu, from June 2015 to September 2015 has also been analysed and will similarly form the basis of tide calendars into the future.

# Further Information

## Online Resources

COSPPac Web site: <http://www.bom.gov.au/cosppac/>

PSLMP Web site: <http://www.bom.gov.au/pacific/projects/pslm/index.shtml>

ENSO Wrap-Up - El Niño / La Niña information: <http://www.bom.gov.au/climate/enso/>

Geoscience Australia South Pacific Regional GNSS Network (Levelling Survey and Continuous GPS Monitoring):

<http://www.ga.gov.au/earth-monitoring/geodesy/gnss-networks.html>

<http://www.ga.gov.au/scientific-topics/positioning-navigation/geodesy/pacificsealevel>

## Acknowledgement

The Monthly Data Report is prepared by the Bureau of Meteorology under the Pacific Sea Level Monitoring (PSLM) Project, Climate and Oceans Support Program in the Pacific (COSPPac).

Further enquiries about the Monthly Data Report may be made to:

Bureau of Meteorology  
Level 4, 431 King William Street  
Adelaide SA 5000  
Tel: +61 8 8366 2730  
Email: [tides@bom.gov.au](mailto:tides@bom.gov.au)  
Website: <http://www.bom.gov.au/oceanography/projects/ntc/ntc.shtml>

Please also note the following:

While care has been taken in the collection, analysis, and compilation of the data, it is supplied on the condition that the Commonwealth of Australia shall not be liable for any loss or injury whatsoever arising from the use of the data. Copyright for material contained in this document is held by the Commonwealth of Australia.





# Appendix 1: SEAFRAME Data Figures

# SIX MINUTE SEA LEVEL OBSERVATIONS (m)

October 2018 (UTC)

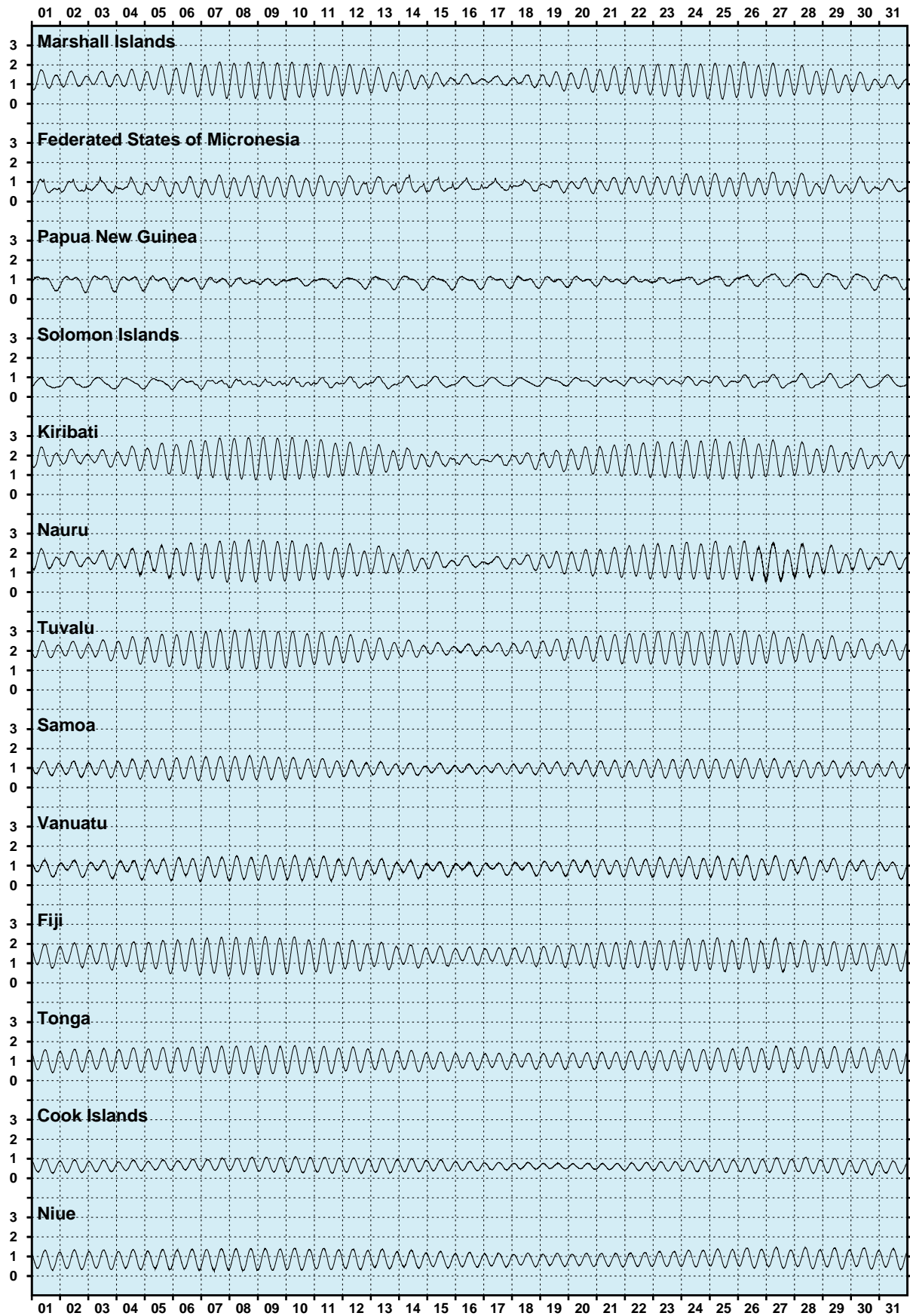


Figure 3. Sea level observations during October 2018.



## SIX MINUTE RESIDUAL WATER LEVELS (m)

October 2018 (UTC)

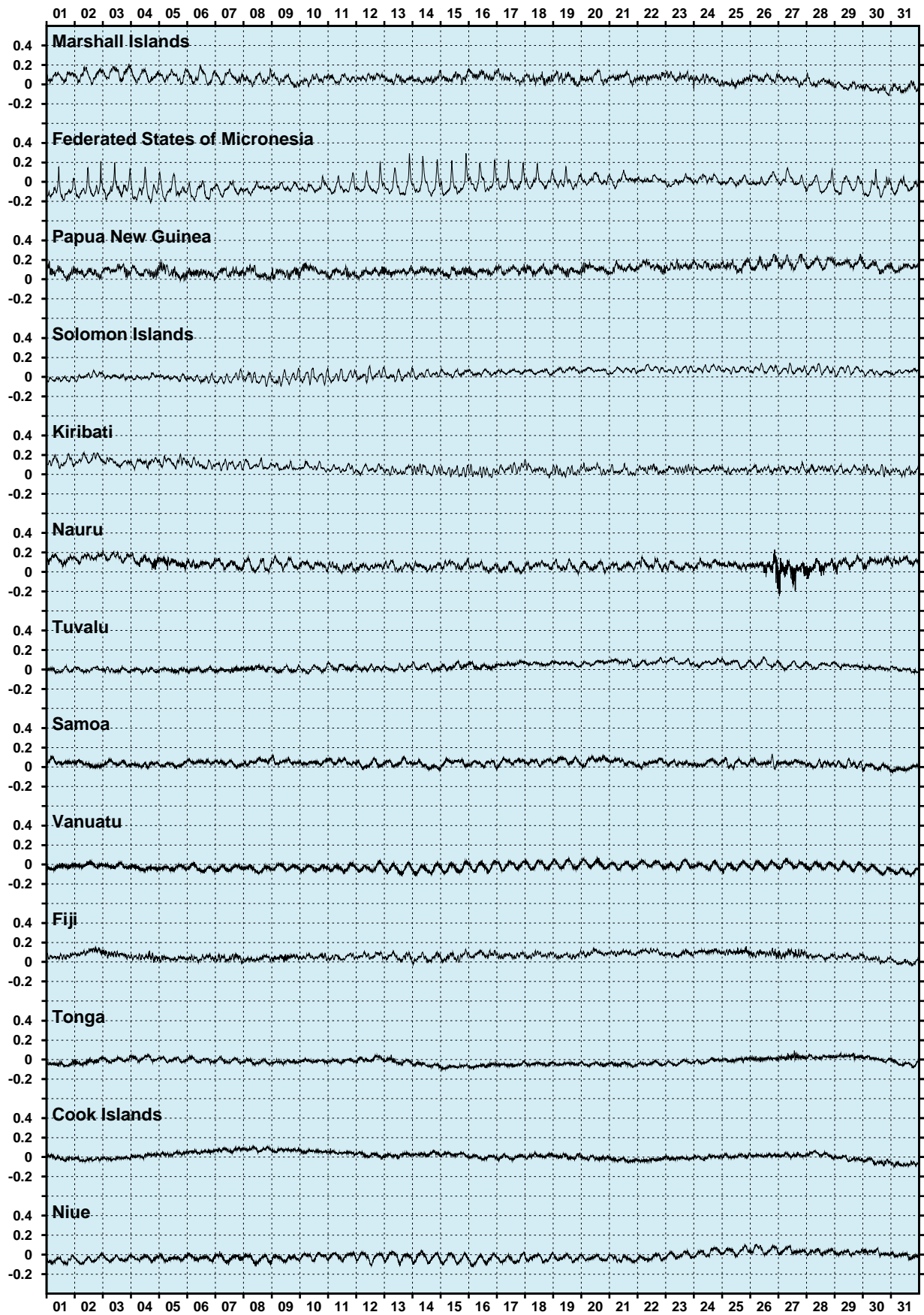


Figure 4. Residual sea levels during October 2018.

# SIX MINUTE RESIDUALS ADJUSTED FOR BAROMETRIC PRESSURE (m)

October 2018 (UTC)

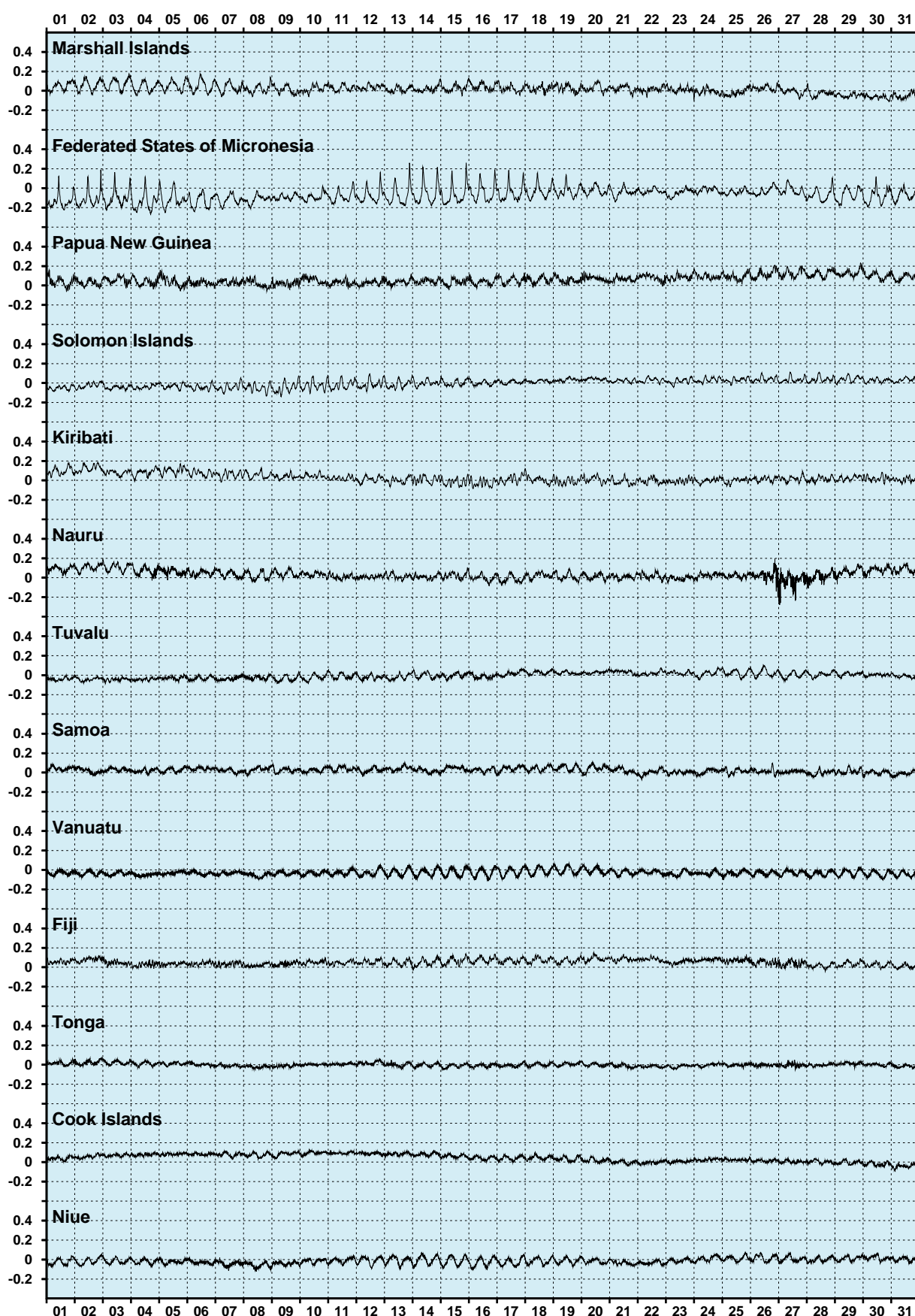
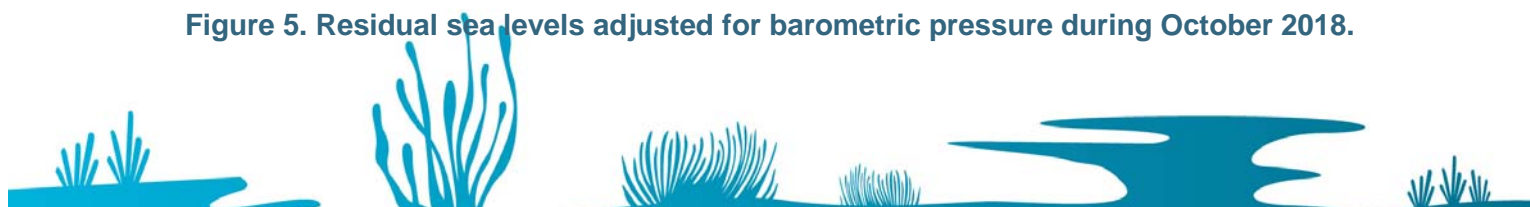


Figure 5. Residual sea levels adjusted for barometric pressure during October 2018.



# HOURLY WIND SPEEDS (m/s)

October 2018 (UTC)

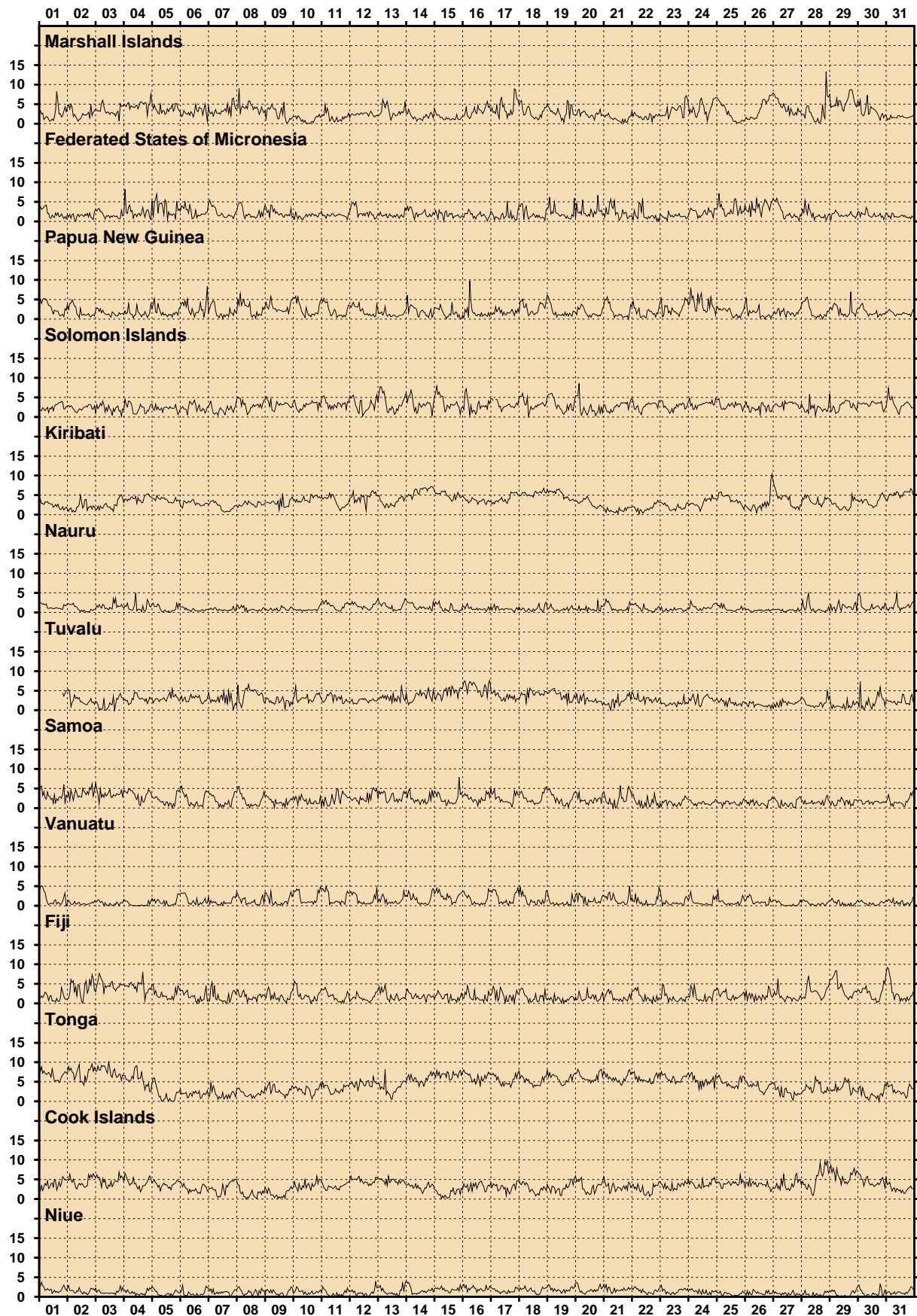


Figure 6. Wind speeds during October 2018.



# HOURLY MAXIMUM WIND GUSTS (m/s)

October 2018 (UTC)

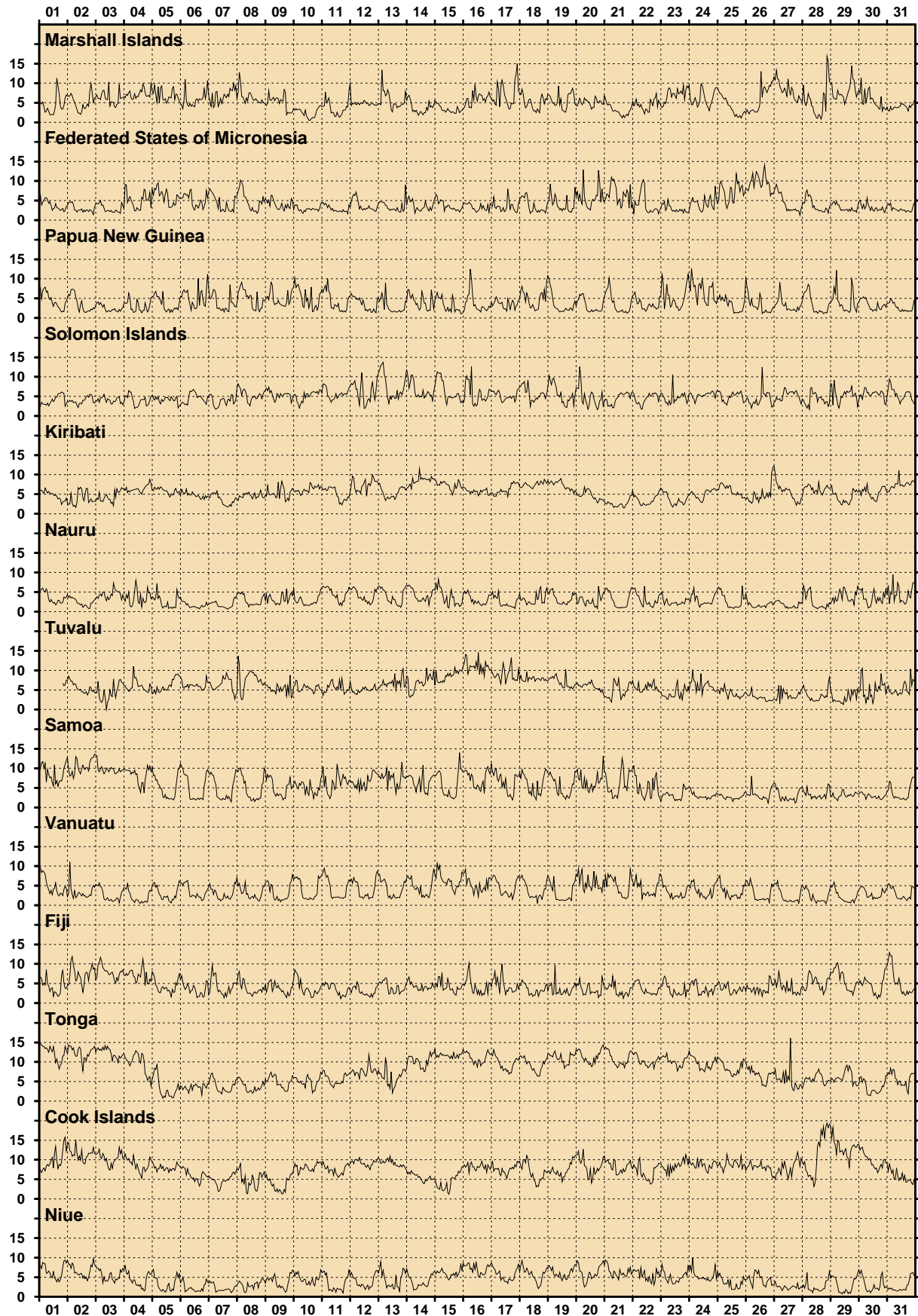


Figure 7. Wind gusts during October 2018.



## HOURLY INCIDENT WINDS (m/s, °True)

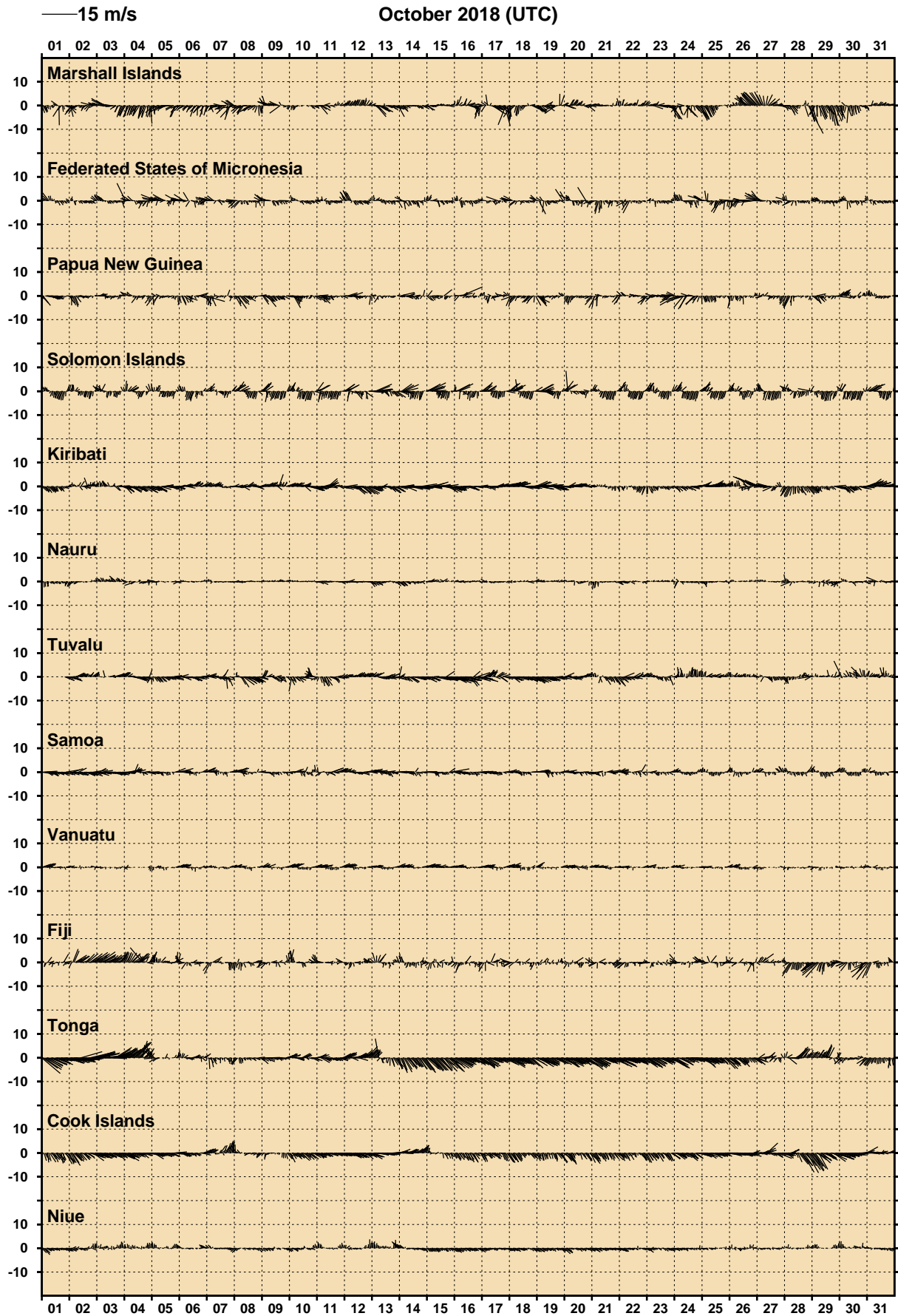


Figure 8. Incident winds during October 2018

# HOURLY AIR TEMPERATURES (°C)

October 2018 (UTC)

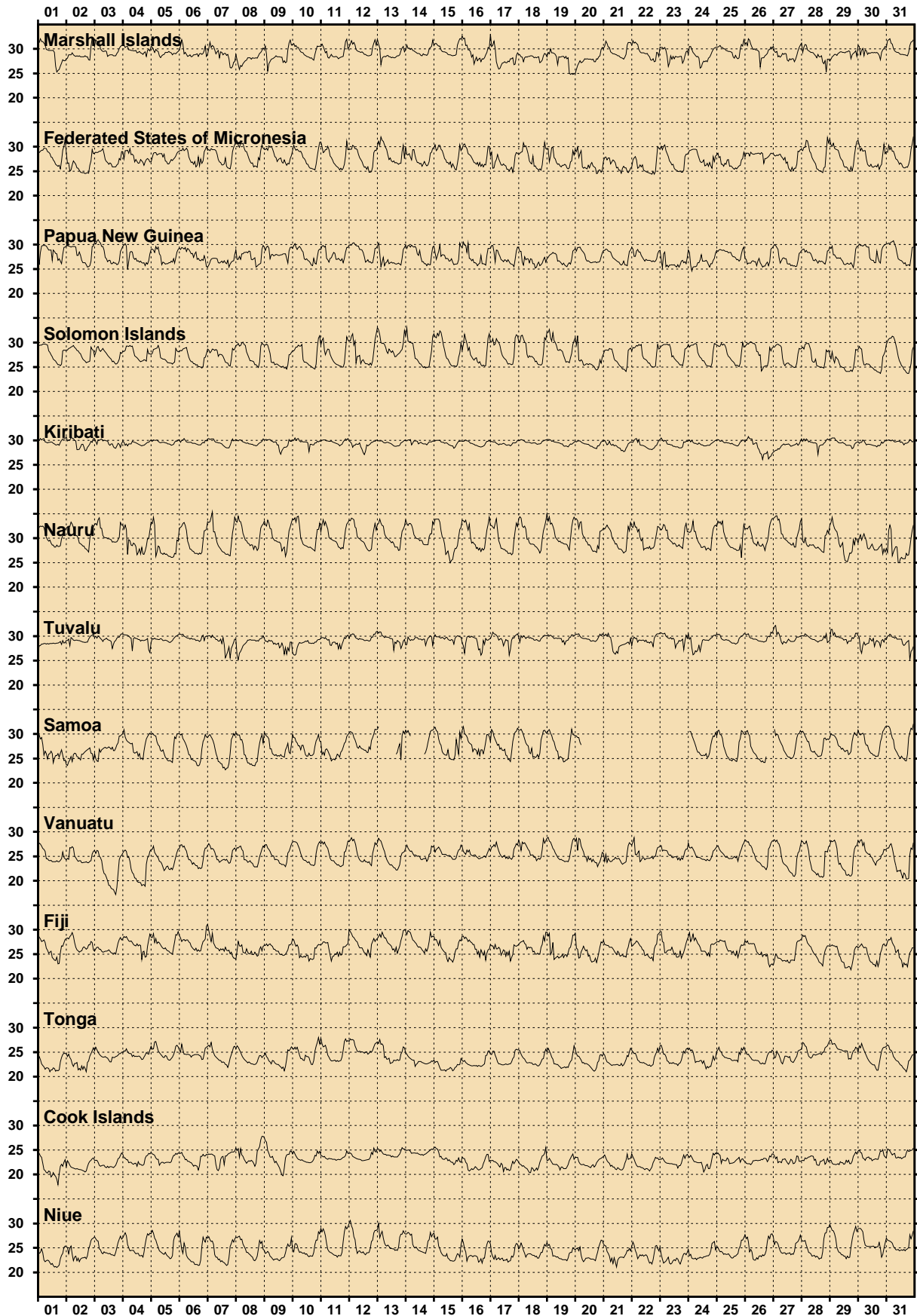


Figure 9. Air temperatures during October 2018.





# HOURLY WATER TEMPERATURES (°C)

October 2018 (UTC)

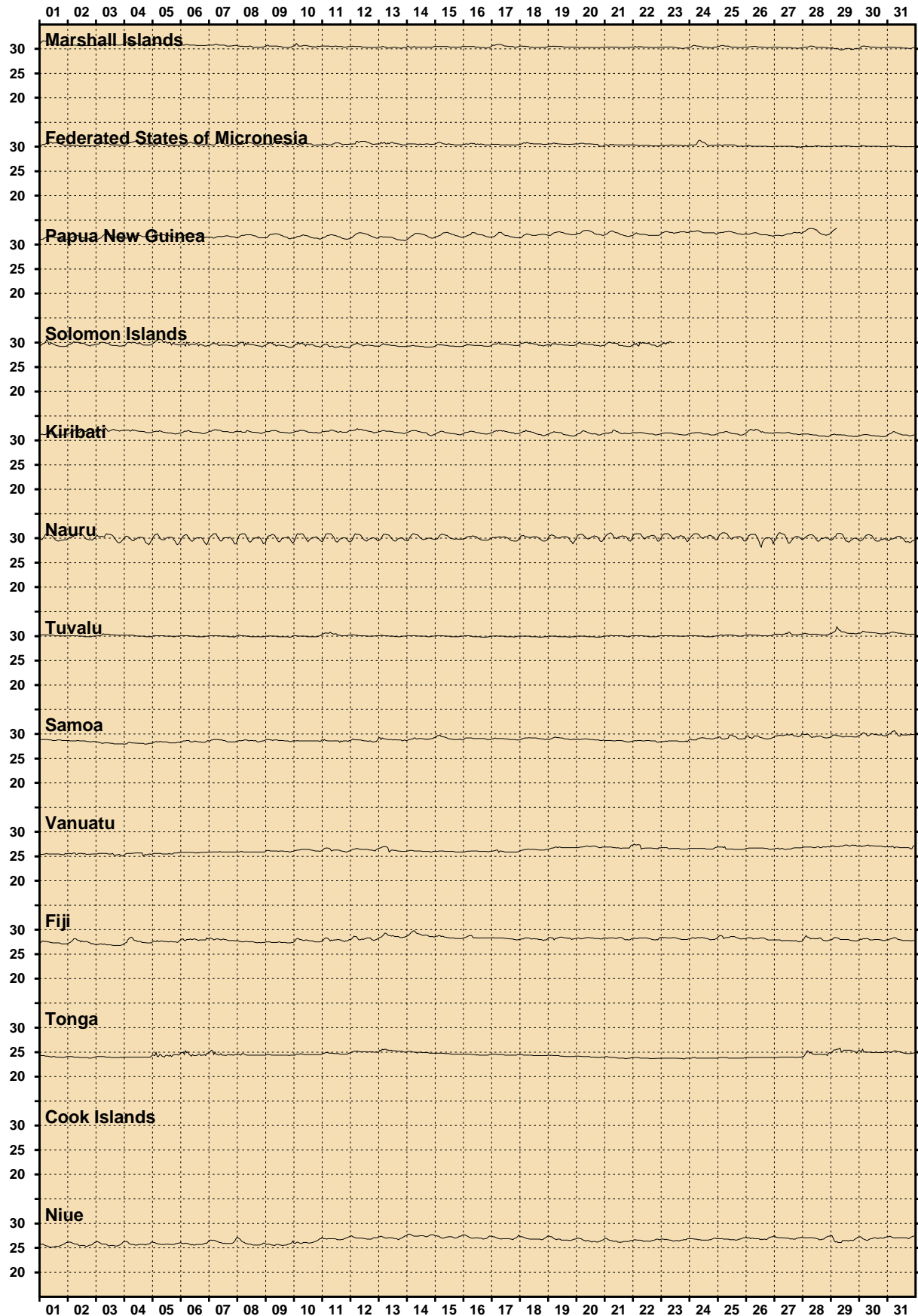


Figure 10. Water temperatures during October 2018.

# HOURLY BAROMETRIC PRESSURE (hPa)

October 2018 (UTC)

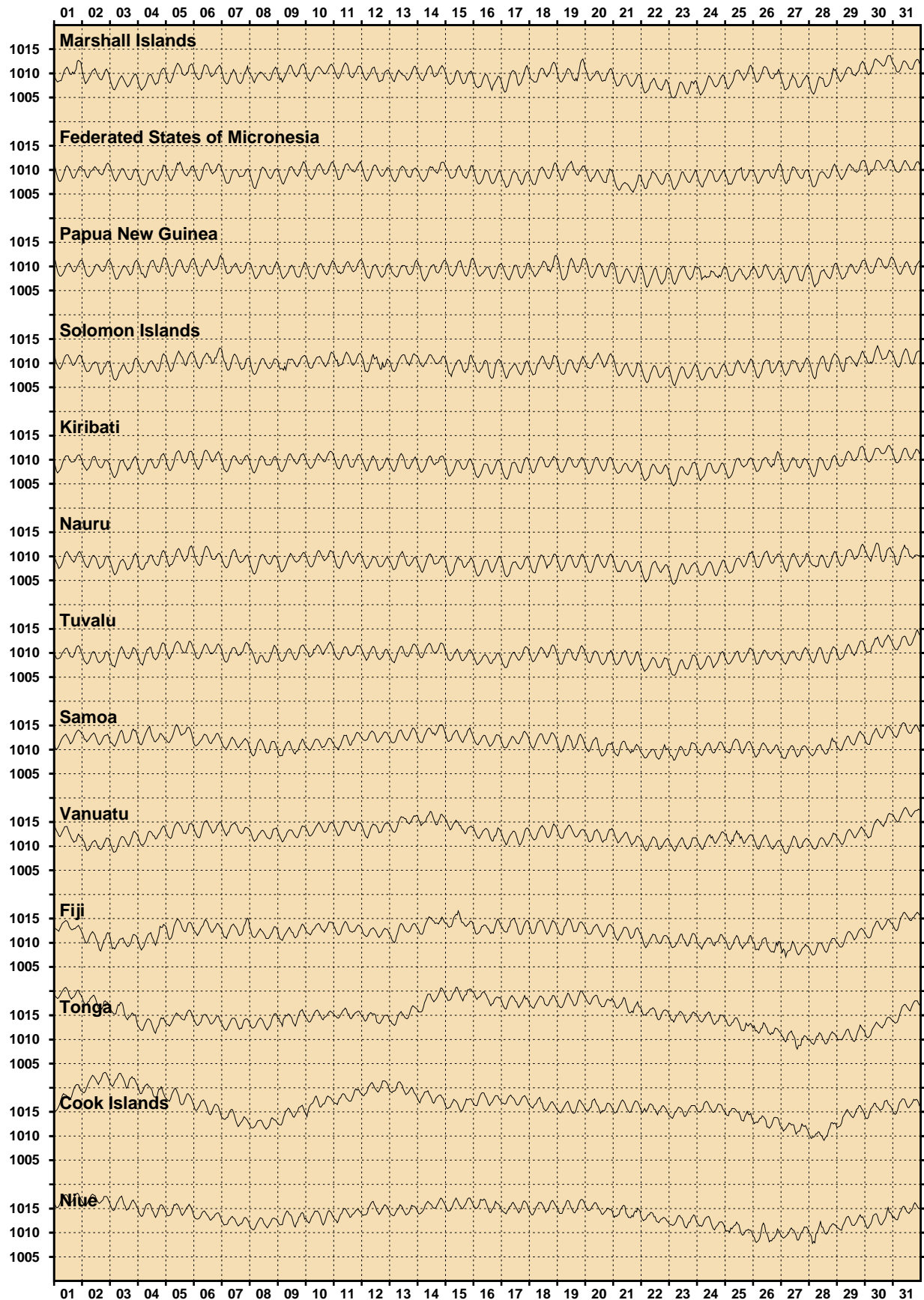


Figure 11. Barometric pressures during October 2018.



## COMPARISON OF OCTOBER 2018 MAX,MIN AND MEAN WITH LONG-TERM OCTOBER VALUES

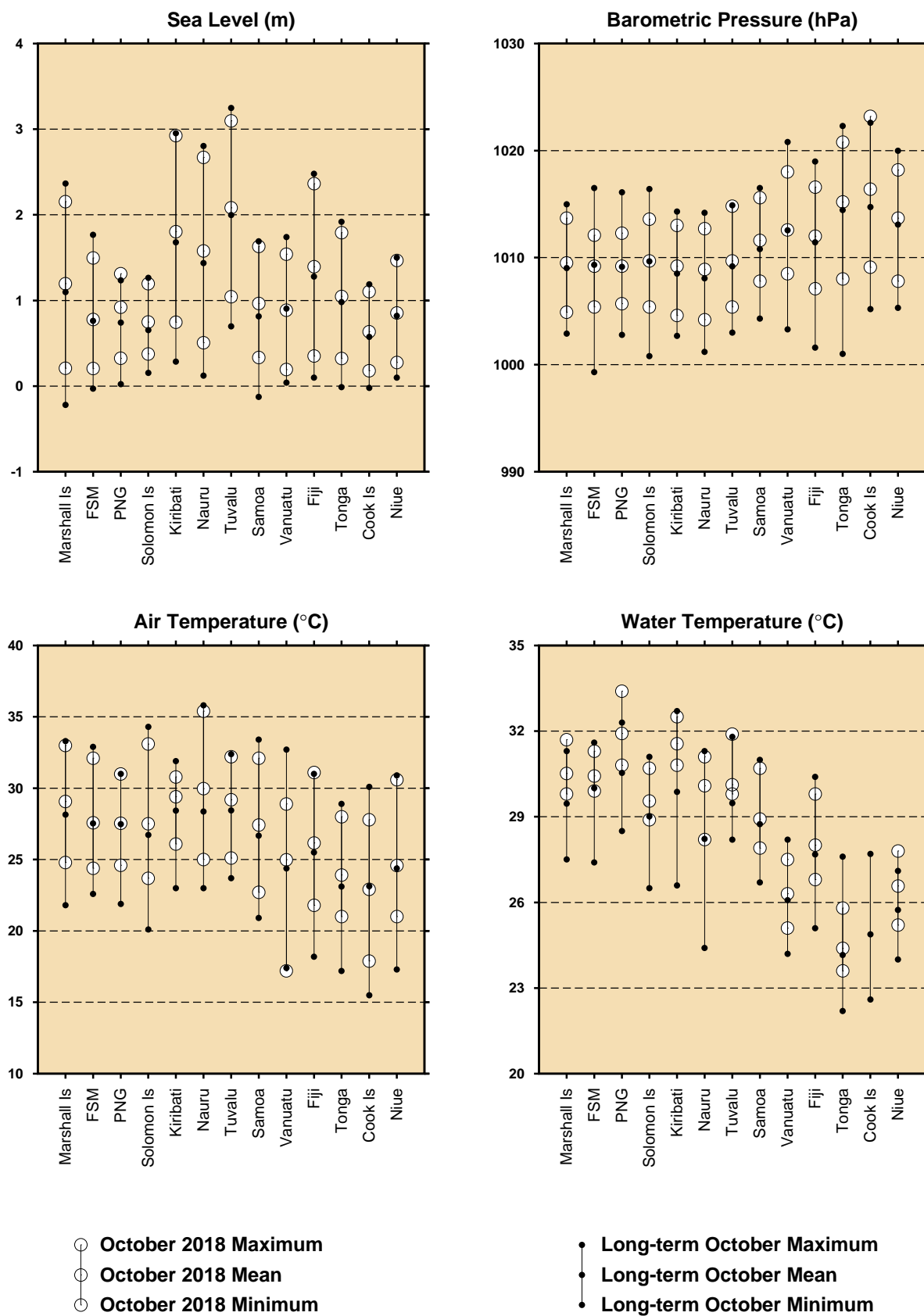


Figure 12. Comparison of October 2018 data with long term October values.

## MONTHLY MEAN SEA LEVELS THROUGH OCTOBER 2018 (m) (The zero line represents mean sea level)

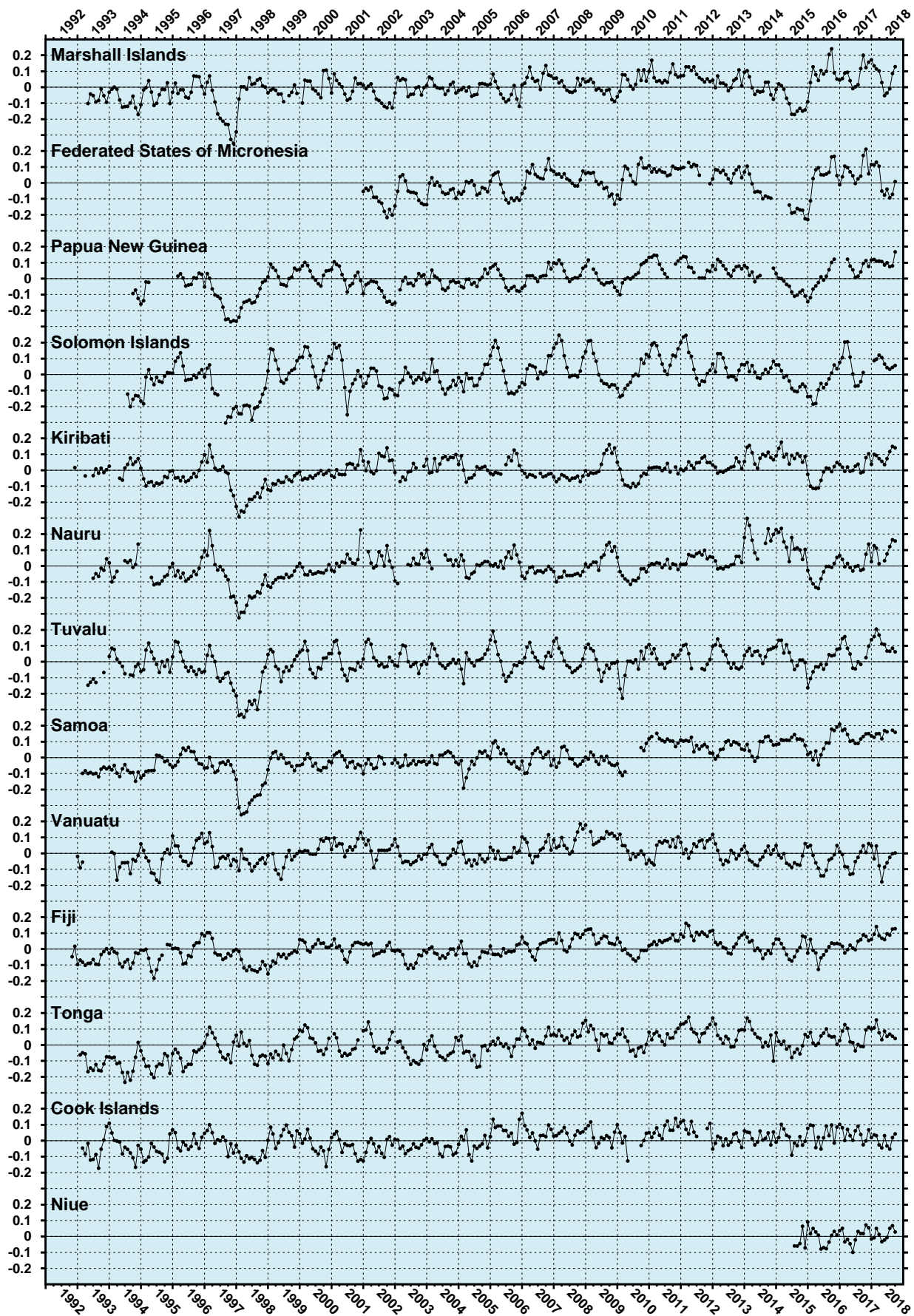


Figure 13. Monthly mean sea levels to October 2018.



## MONTHLY MEAN BAROMETRIC PRESSURES THROUGH OCTOBER 2018 (hPa)

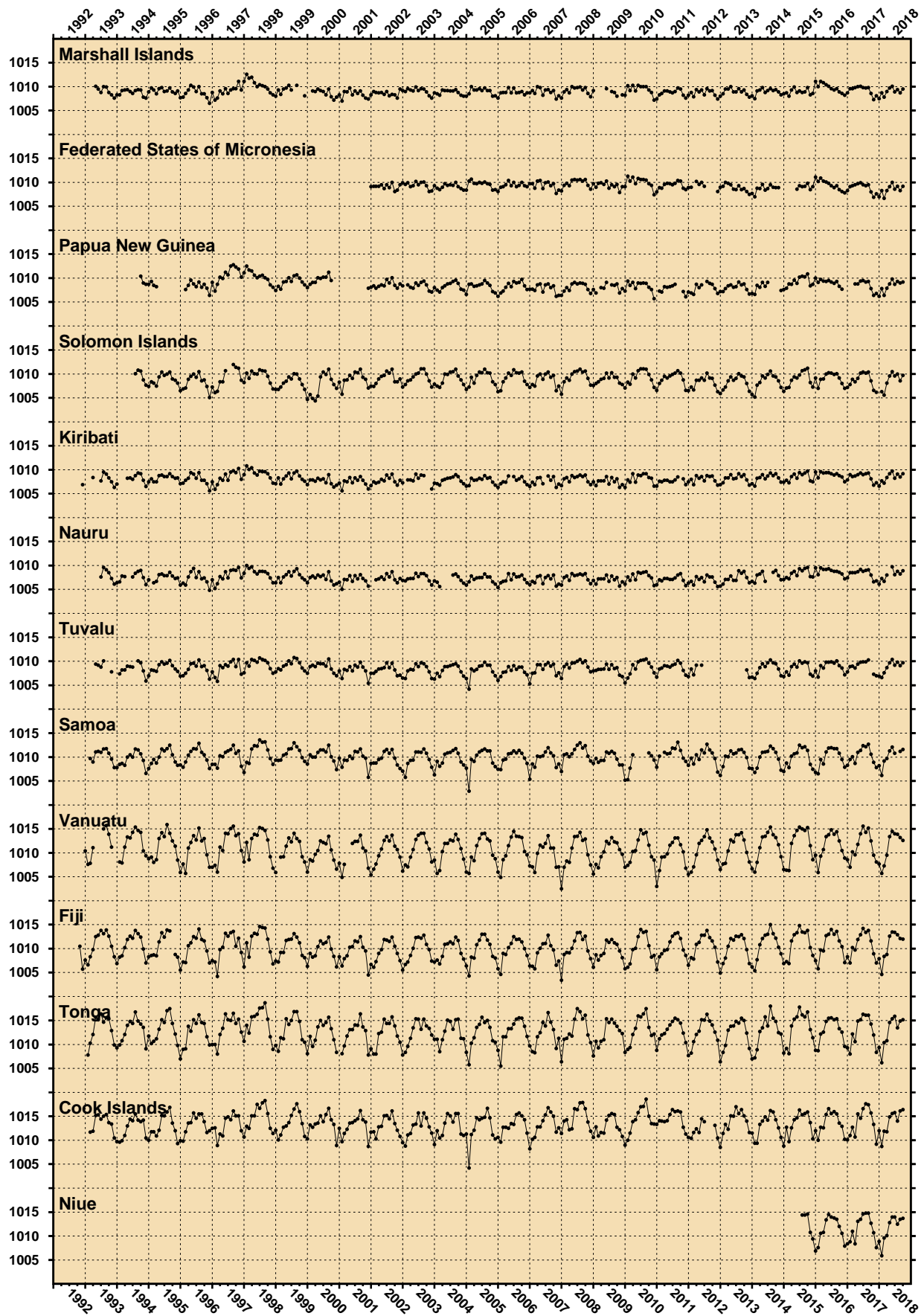


Figure 14. Monthly mean barometric pressures to October 2018.



## MONTHLY MEAN WATER TEMPERATURES THROUGH OCTOBER 2018 (°C)

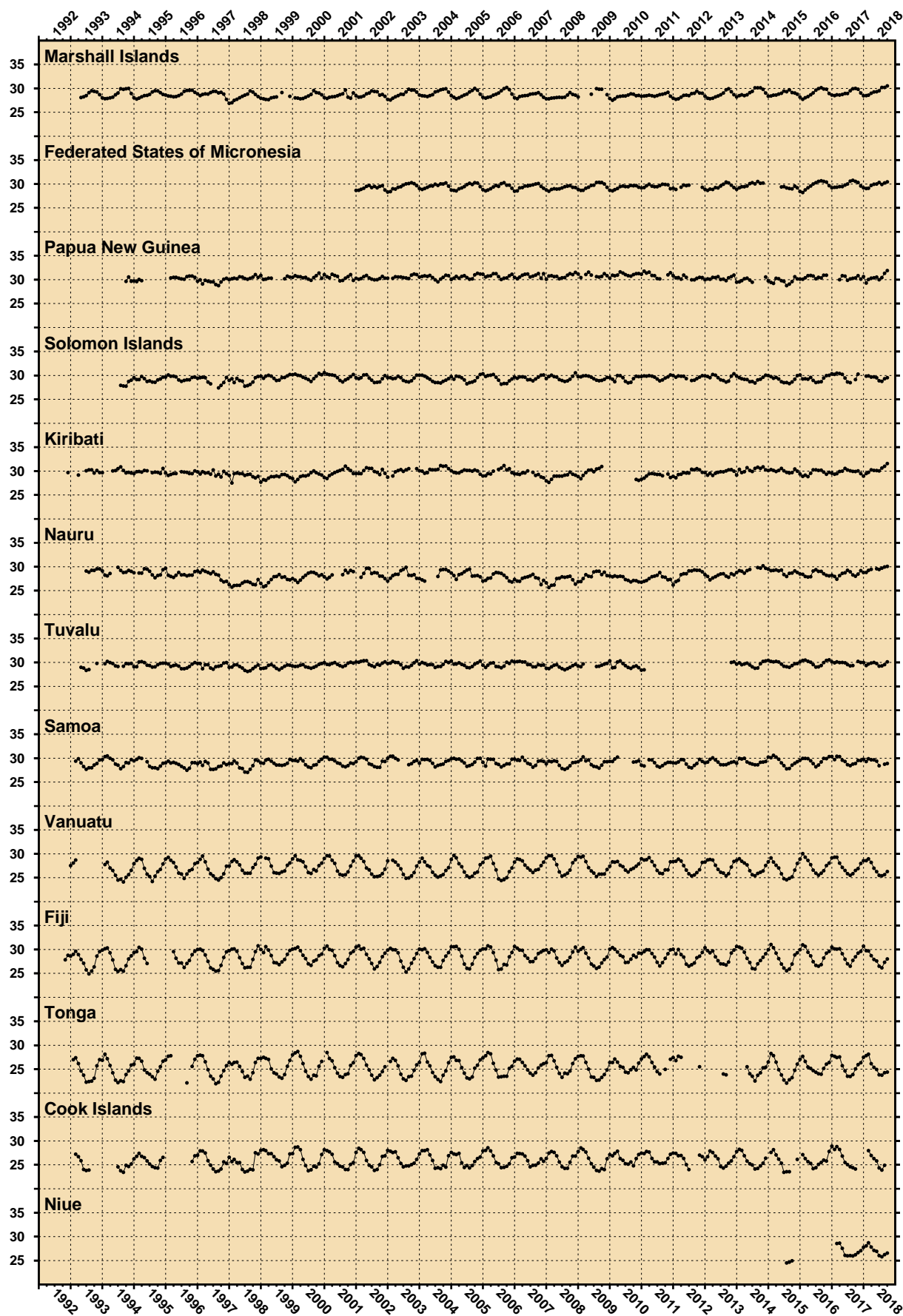


Figure 15. Monthly mean water temperatures to October 2018.



## MONTHLY MEAN AIR TEMPERATURES THROUGH OCTOBER 2018 (°C)

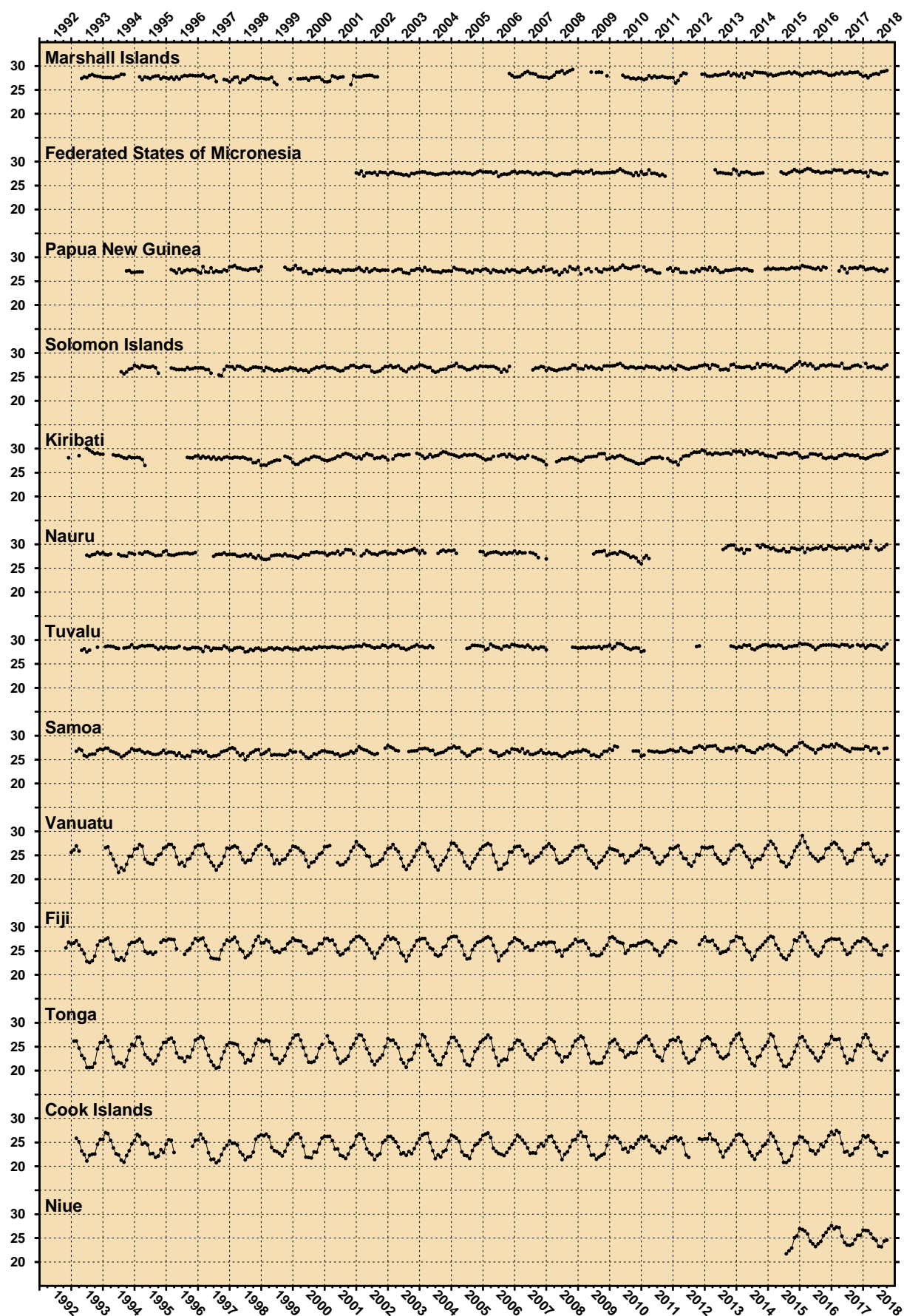


Figure 16. Monthly mean air temperatures to October 2018.

## SEA LEVEL ANOMALIES THROUGH OCTOBER 2018 (m)

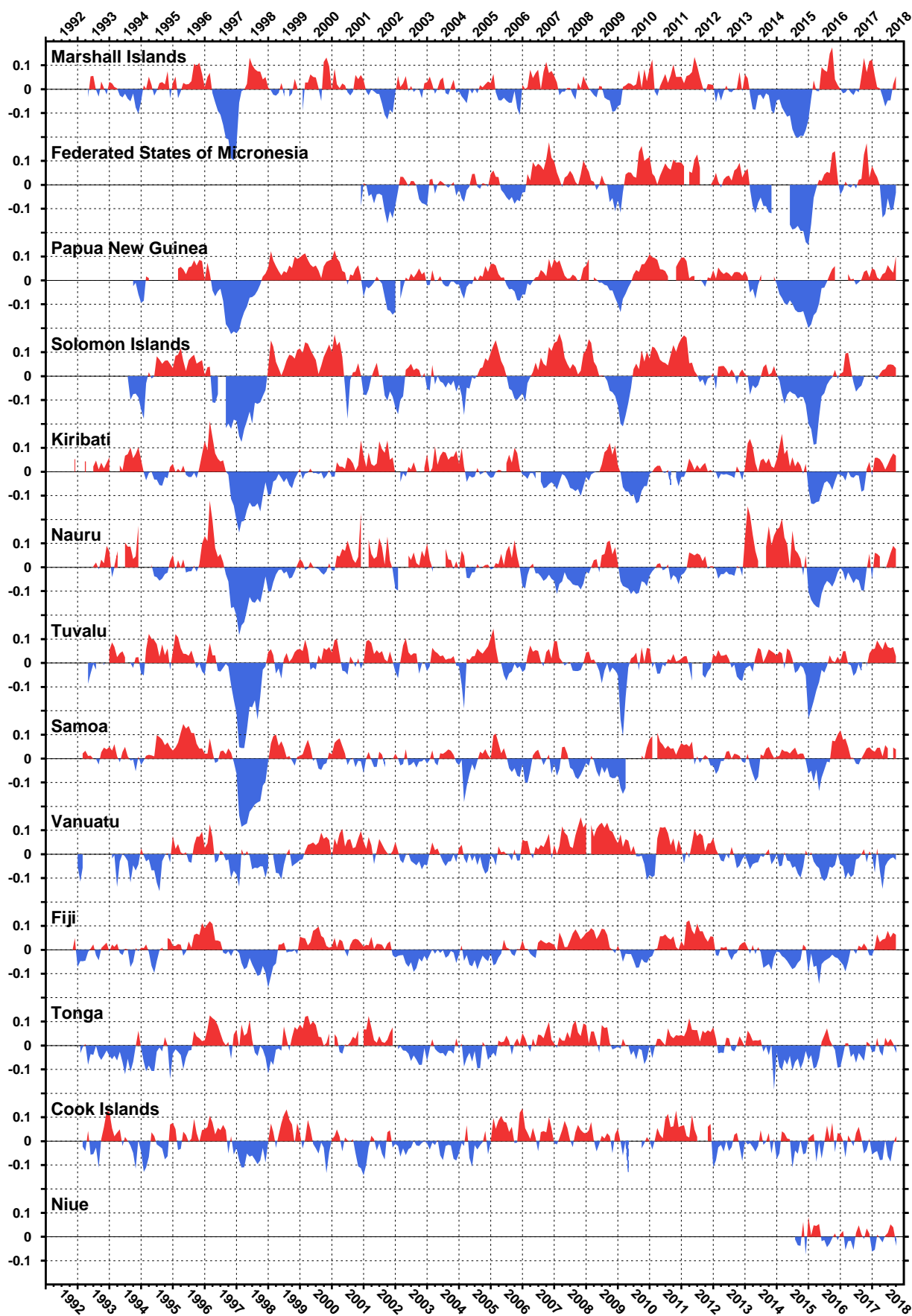


Figure 17. Monthly sea level anomalies to October 2018.





## BAROMETRIC PRESSURE ANOMALIES THROUGH OCTOBER 2018 (hPa)

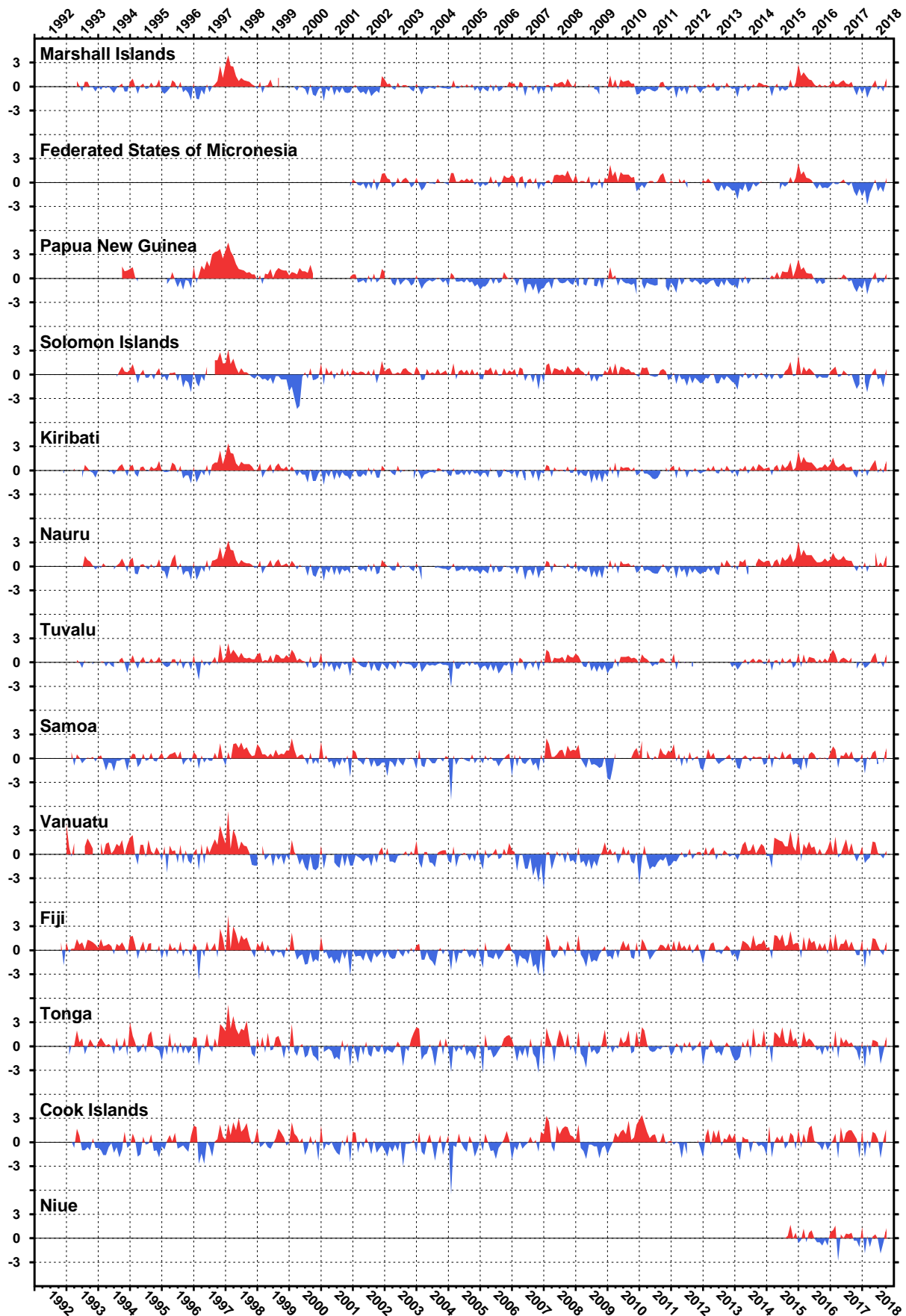


Figure 18. Monthly barometric pressure anomalies to October 2018.

## WATER TEMPERATURE ANOMALIES THROUGH OCTOBER 2018 (°C)

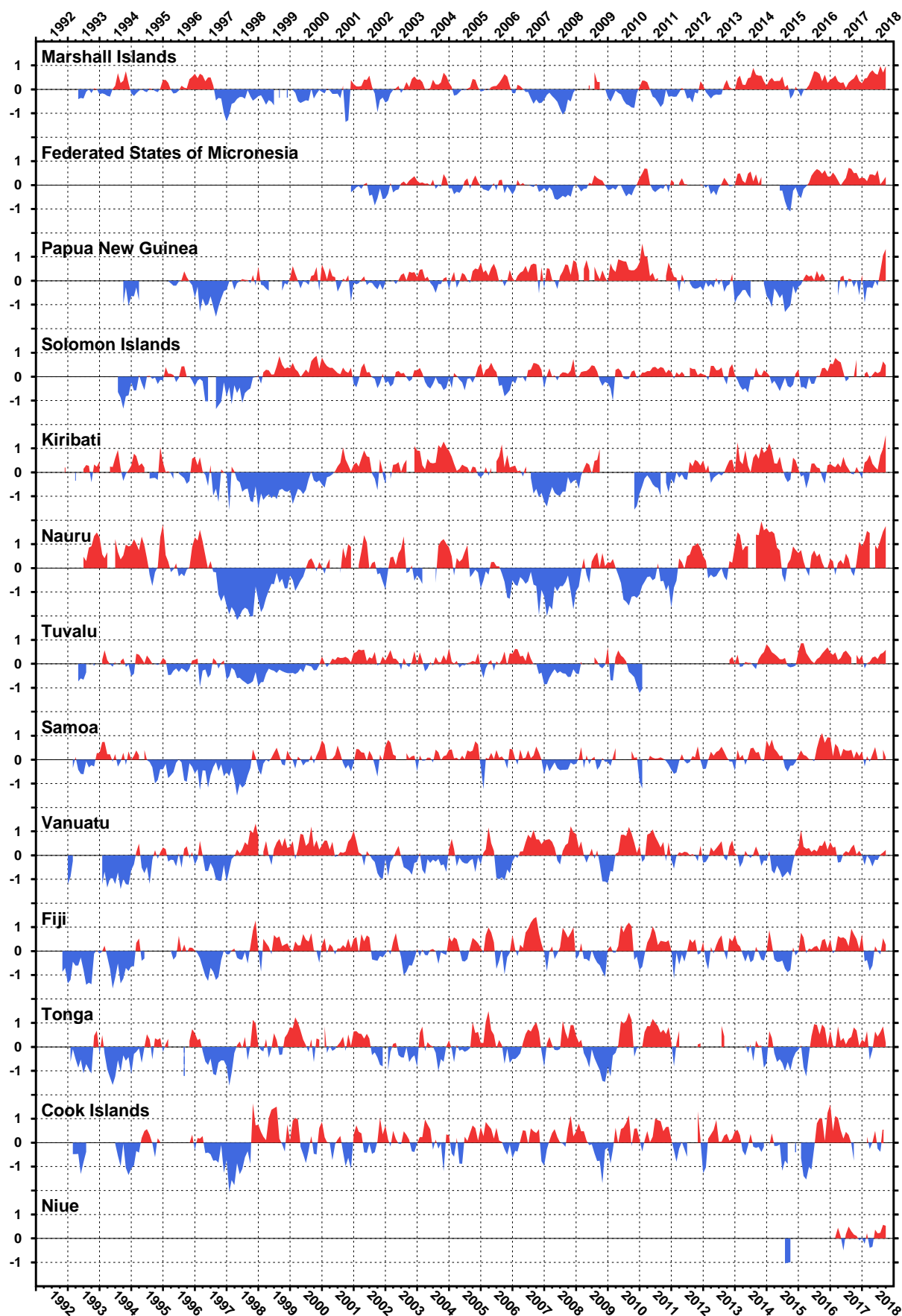


Figure 19. Monthly water temperature anomalies to October 2018.



## AIR TEMPERATURE ANOMALIES THROUGH OCTOBER 2018 (°C)

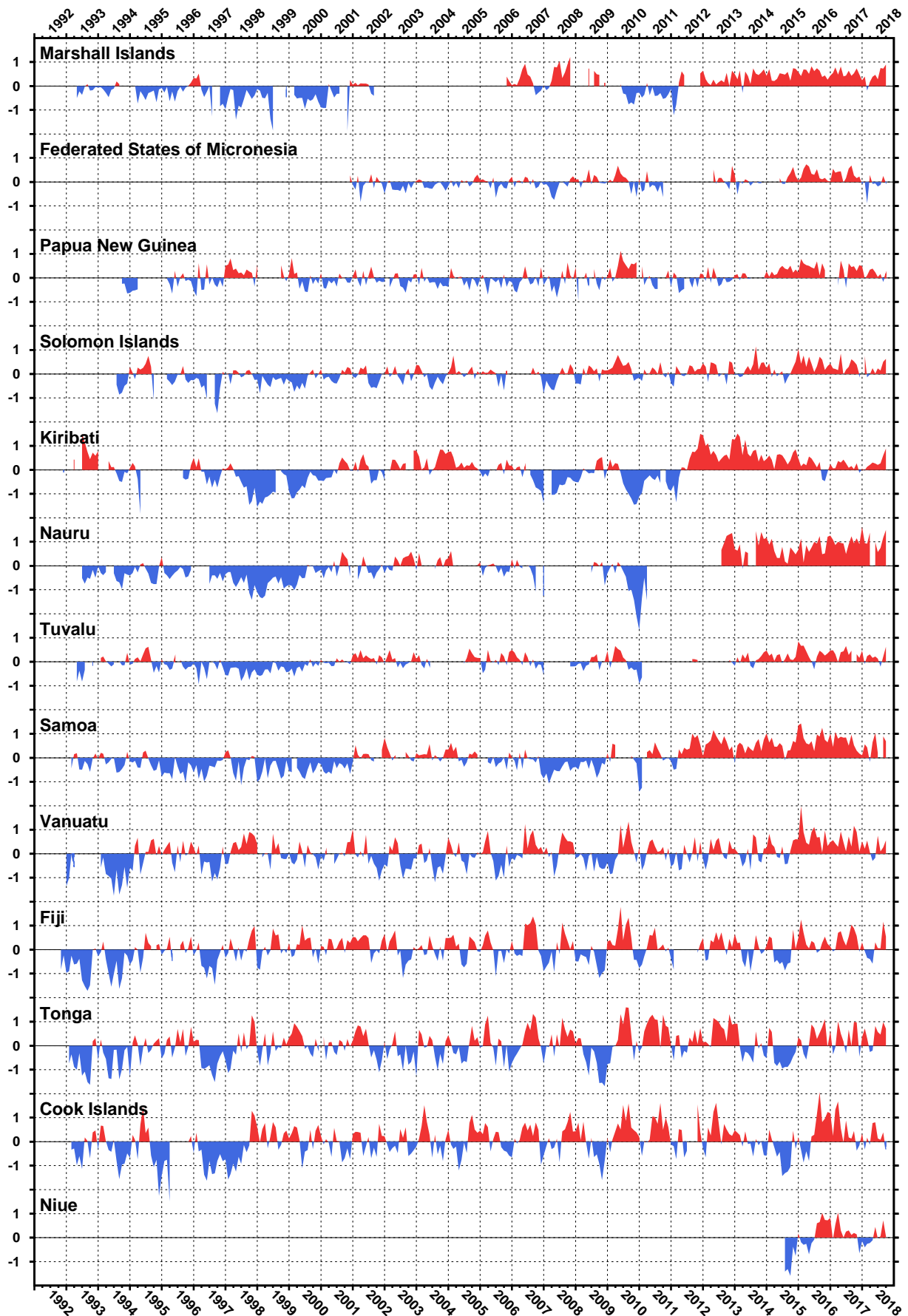


Figure 20. Monthly air temperature anomalies to October 2018.

## MONTHLY SEA LEVEL DATA RETURN THROUGH OCTOBER 2018 (%)

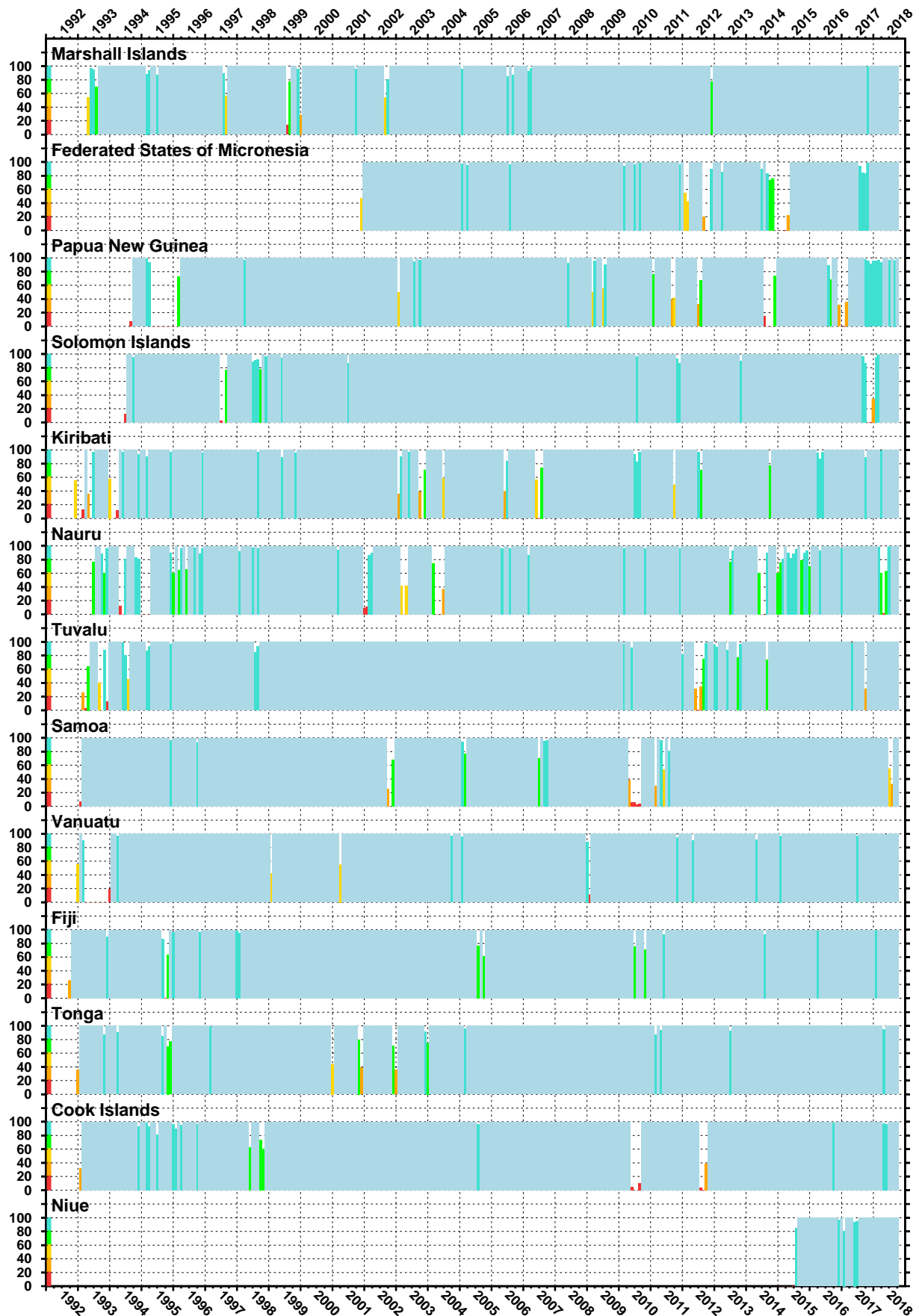


Figure 21. Sea level data return.

